

How to make a quick pairing command barcode for a Bluetooth Dongle

Applies to (Scanner)

Ver 1.0

8-9-2024

Overview:

This document is used to guide how to make a quick pairing command barcode for a Bluetooth dongle.

Step:

1. Get the Bluetooth address of the Bluetooth dongle

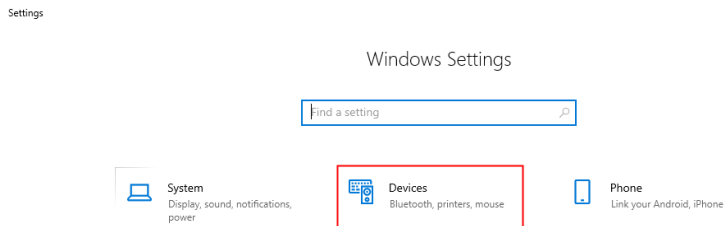
1.1. Insert the Bluetooth dongle into the computer USB port



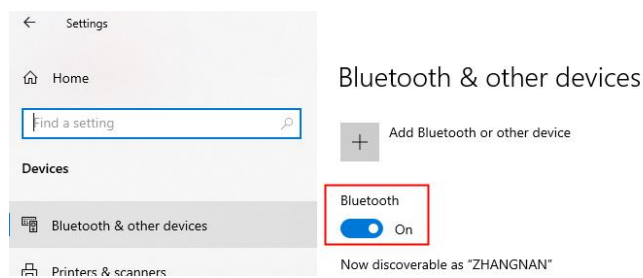
1.2. Open Start on your computer and find Settings



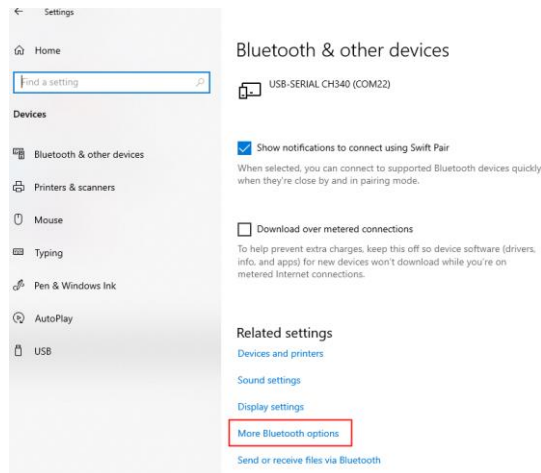
1.3. Find "Devices" in the new pop-up window



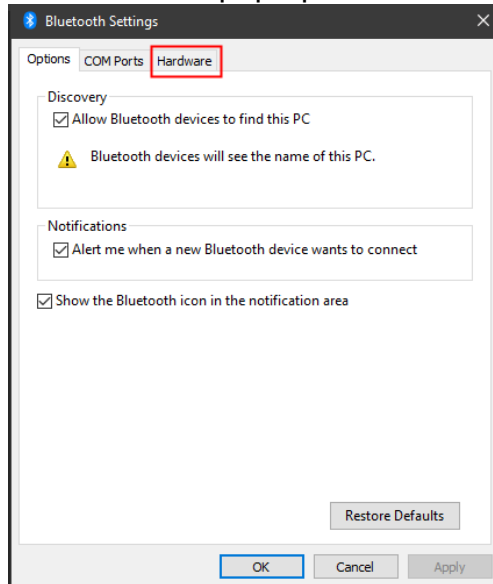
1.4. In the new pop-up window, turn on "Bluetooth"



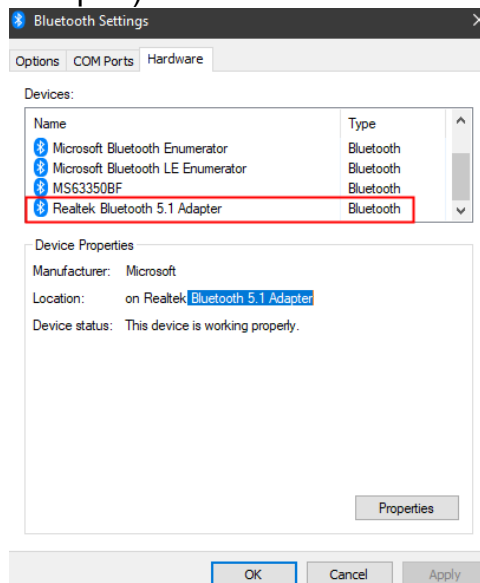
1.5. Scroll down and find “More Bluetooth options”.



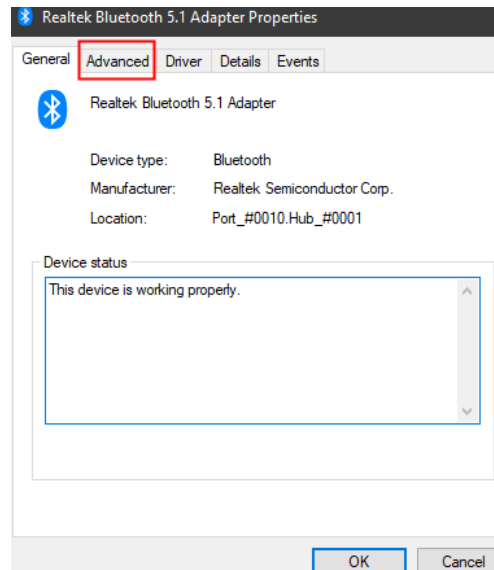
1.6. Select “Hardware” in the new pop-up window



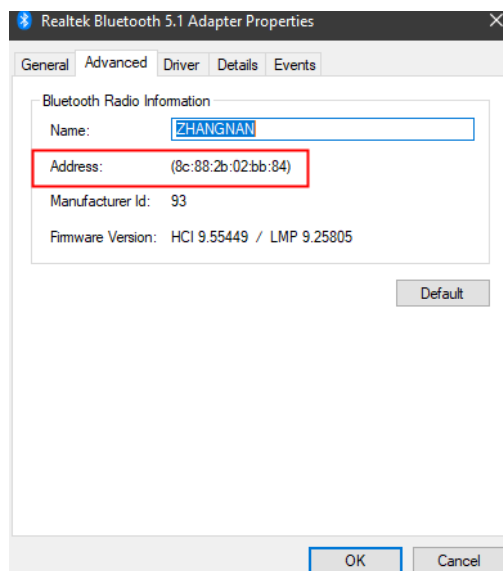
1.7. Find the Bluetooth device name in the devices list (the test Dongle name is Bluetooth 5.1 Adapter)



- 1.8. Double-click the Dongle name and select "Advanced" in the new pop-up window



- 1.9. The new interface can view the Bluetooth address.



2. Create a quick pairing command barcode

2.1 Command format : <x>

< : Indicates the start symbol of a command

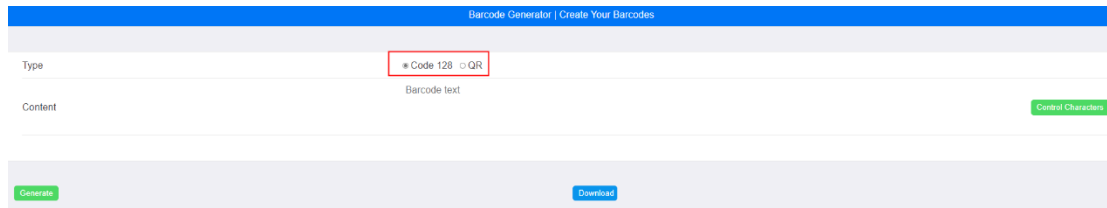
X : Indicates the Bluetooth address

> : Indicates the end of the command

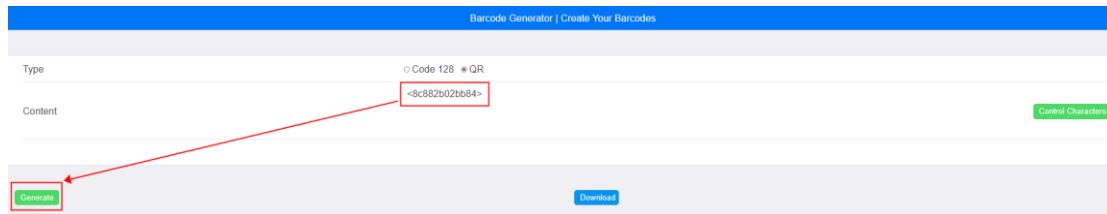
Note: The Bluetooth address format only retains characters, and does not require ":", for example: <8c882b02bb84>

2.2 Open URL: <https://www.generalscan.net:8443/H5/CustomBarcode/>

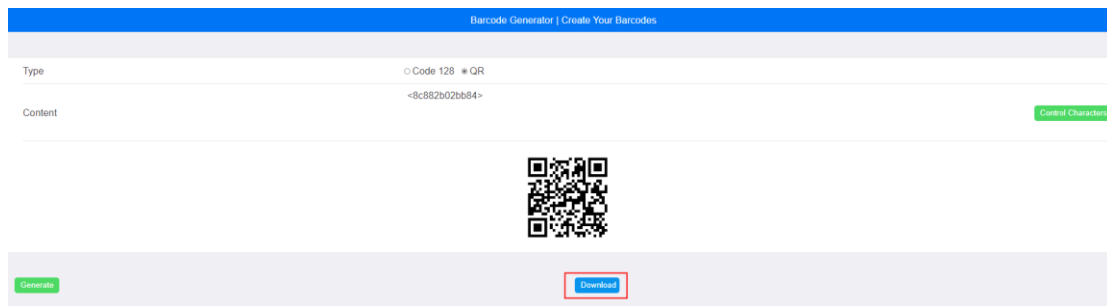
2.3 Select "Code128" to make a 1D barcode, and select "QR" to make a 2D code. The screenshot below is for reference.



2.4 Enter the password into this area and click "Generate"



2.5 After generating the QR code, click "Download" to save the command image to your computer.



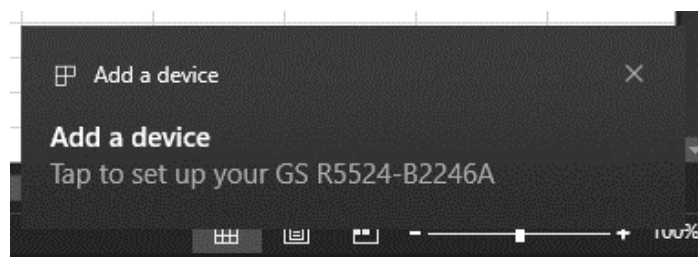
3. Quick pairing connection

3.1 Turn on the scanner, scan the barcode below, and enter Bluetooth HID Mode (the blue indicator light flashes quickly).

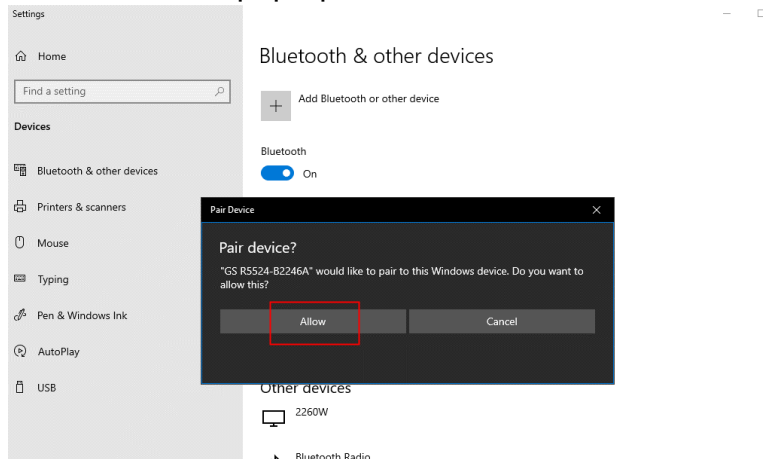


Bluetooth HID Mode(*)

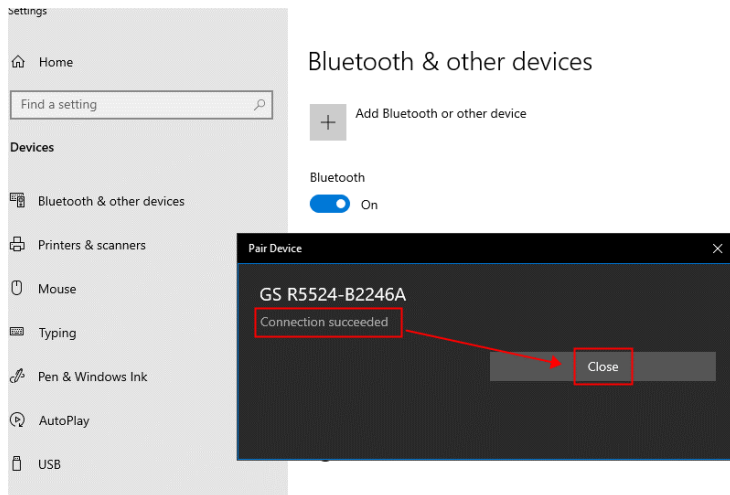
3.2 Open the prepared quick pairing command barcode and scan it with the scanner. After the scan is successful, a pop-up window will appear on the computer desktop. Click on the pop-up window with the mouse.



3.3 Click "Allow" in the new pop-up window



3.4 When a new pop-up window appears saying "Connection succeeded", click "Close"



3.5 Now the scanner is connected and you can open a text file to scan and output.