

How to Use Generalscan DFU Tools

**Ver 2.0
3-21-2025**

Overview:

This document is used to guide how to use the app "Generalscan DFU Tools" to upgrade scanner firmware.

Steps

1. Enable scanner DFU mode after power on it by scanning the barcode below (the scanner light indicator blinks blue and green alternately).



{G1002/22308}



Enter DFU Mode

Another way to enter DFU mode: Connect the scanner to the Type-C provided by Generalscan, and the other end of the Type-C does not need to be connected to any computer or movie. The scanner needs to be equipped with batteries, press the trigger for 3s, and the scanner will automatically enter DFU mode

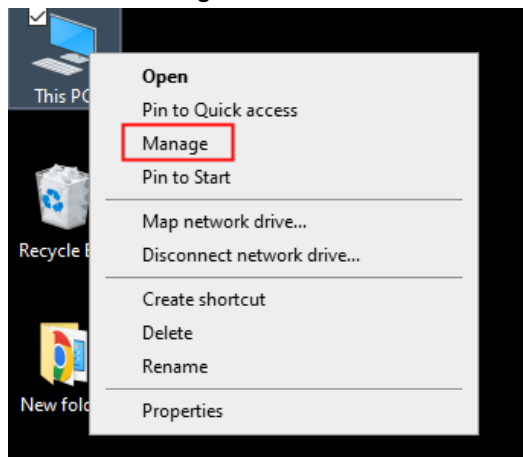
[Enter into DFU Mode - Type-C Cable.mp4](#)

Click the link above to see how to operate

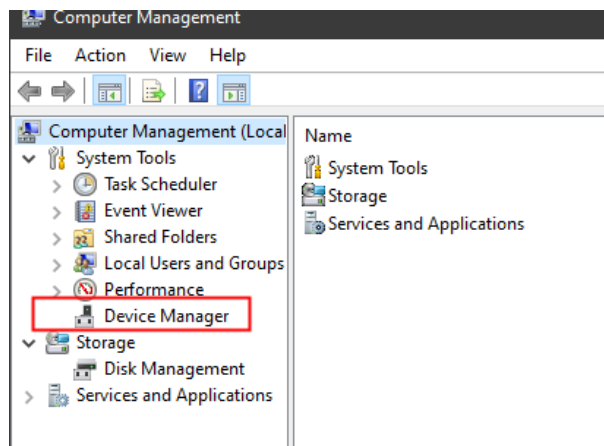
2. Open the "DFU Tools V3.0.6" folder and install DFUSe_Demo_V3.0.6_Setup.exe

| | | | | |
|---|-----------------------------|--------------------|-------------|-----------|
|  | Driver | 2025-03-21 9:41 AM | File folder | |
|  | DfuSe_Demo_V3.0.6_Setup.exe | 2018-06-11 7:45 AM | Application | 18,821 KB |

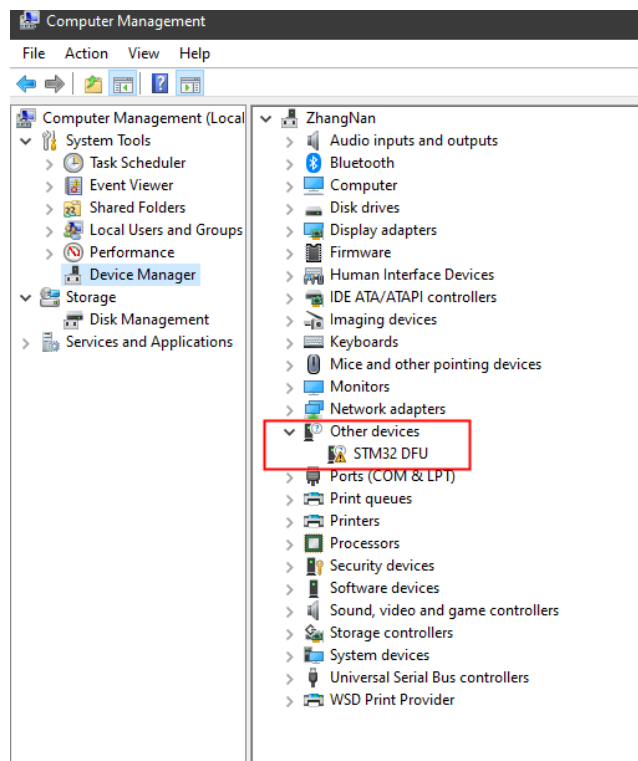
3. Installation Complete, Connect the scanner with computer by Type-C interface.
4. Right-click "This PC", select "Manage".



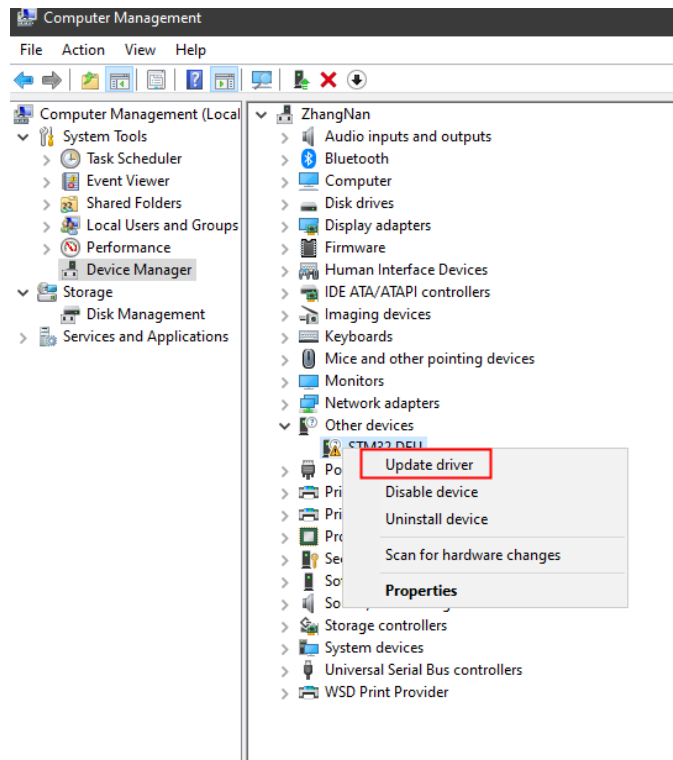
5. Then click on "Device Manager".



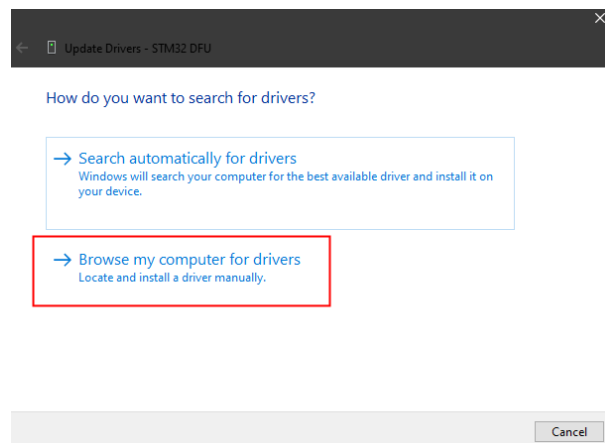
6. Find “Other devices”- “STM32 DFU”.



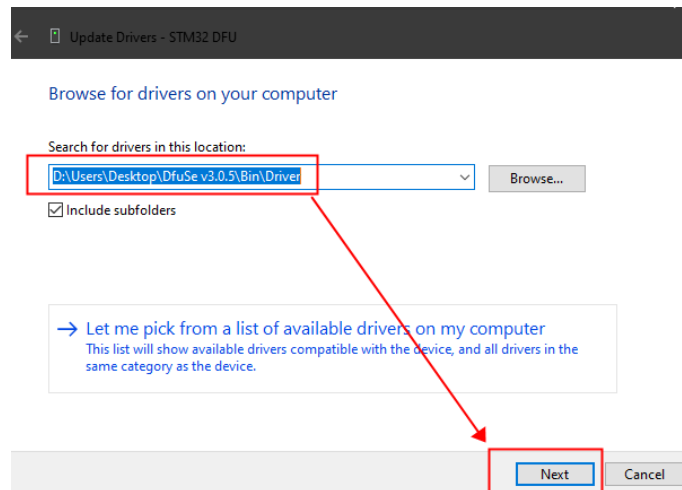
7. Right click “STM32 DFU”, then select “Update Driver”.



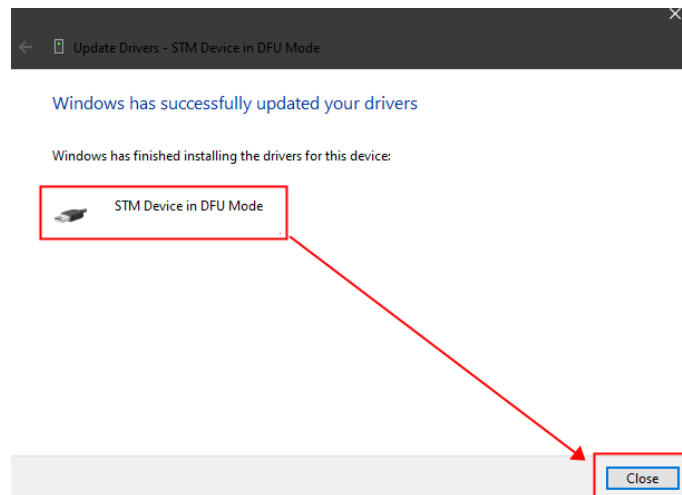
8. Select “Browse my computer for drivers” from the pop-up window.



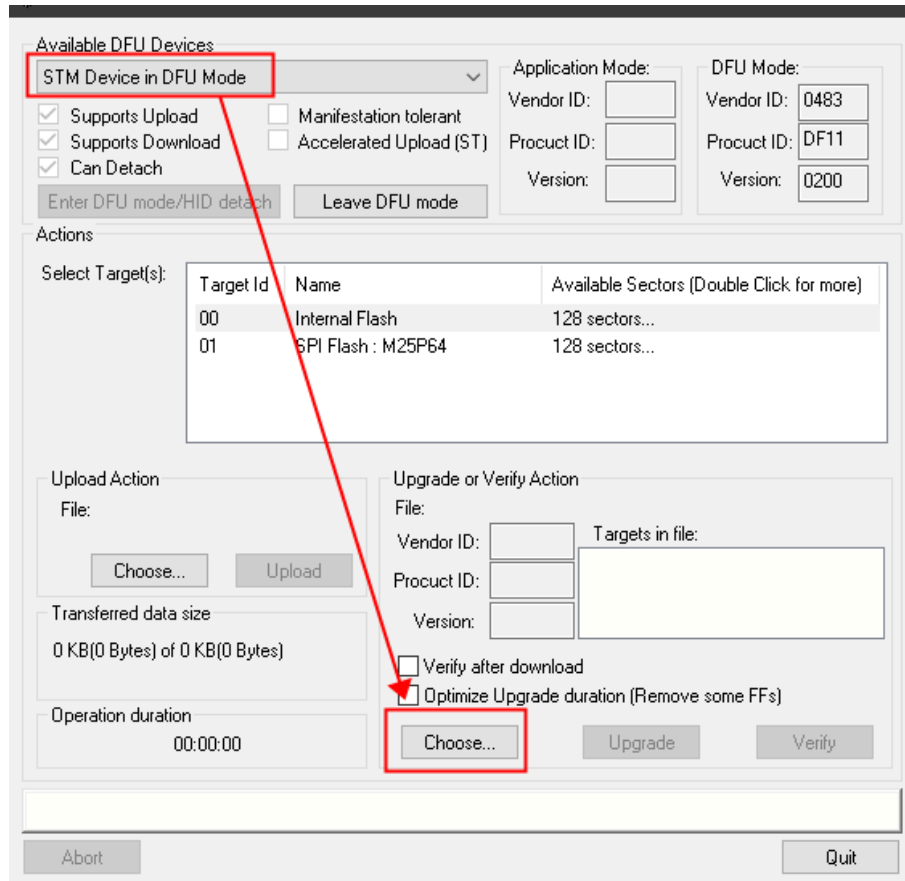
9. Click “Browse...”.
10. Find the folder “Driver” within the folder “DFU Tools V3.0.6”, then click “OK”.
11. Then click “Next”.



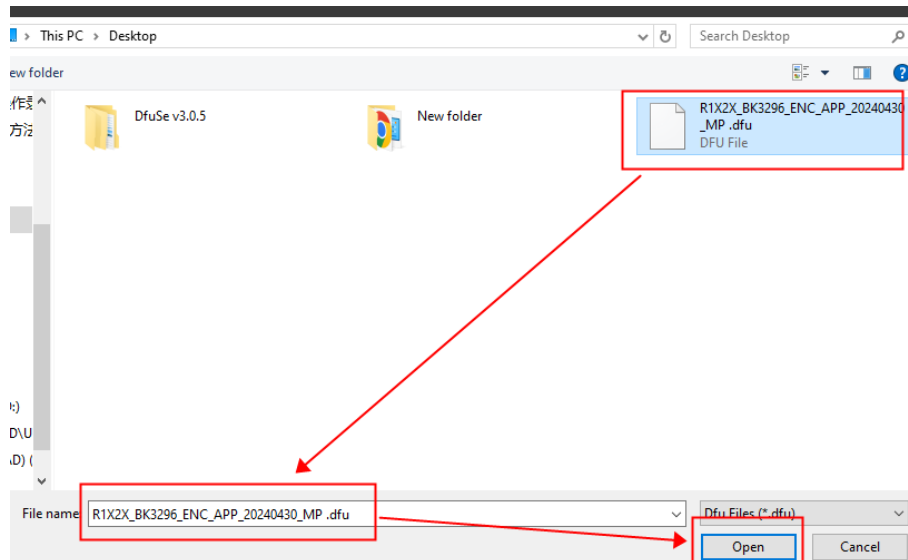
12. Now the driver will be installed automatically. Then click “Close” after finishing installation.



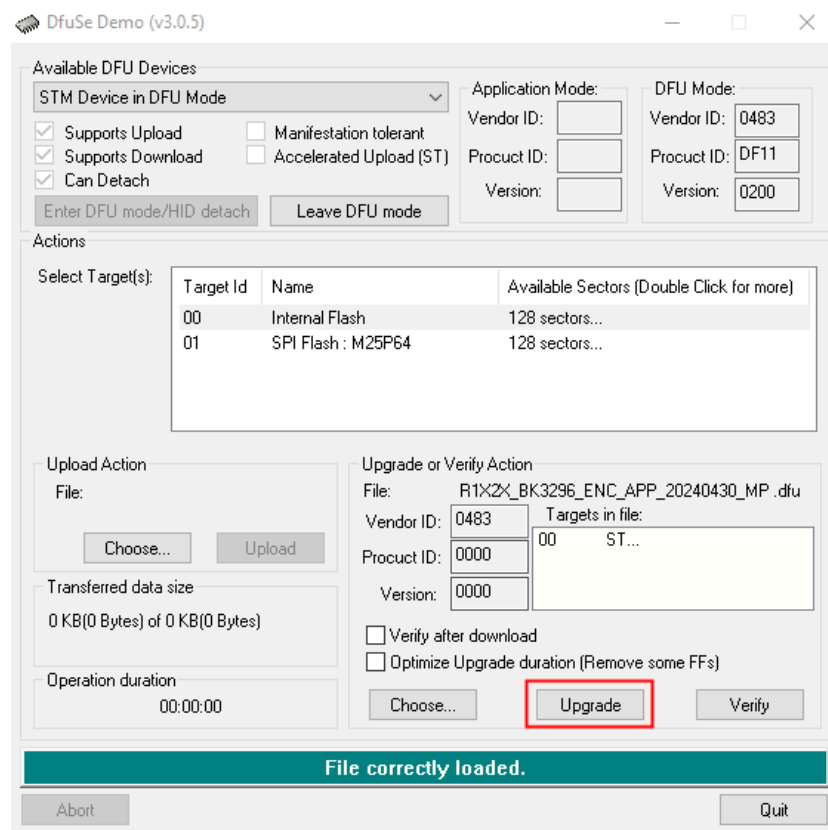
13. Open the installed DFU Tools V3.0.6 software. In the pop-up window, it is correct if it shows “STM Device in DFU Mode” at “Available DFU Devices”. Otherwise, please repeat the steps above. Then click “Choose...”.



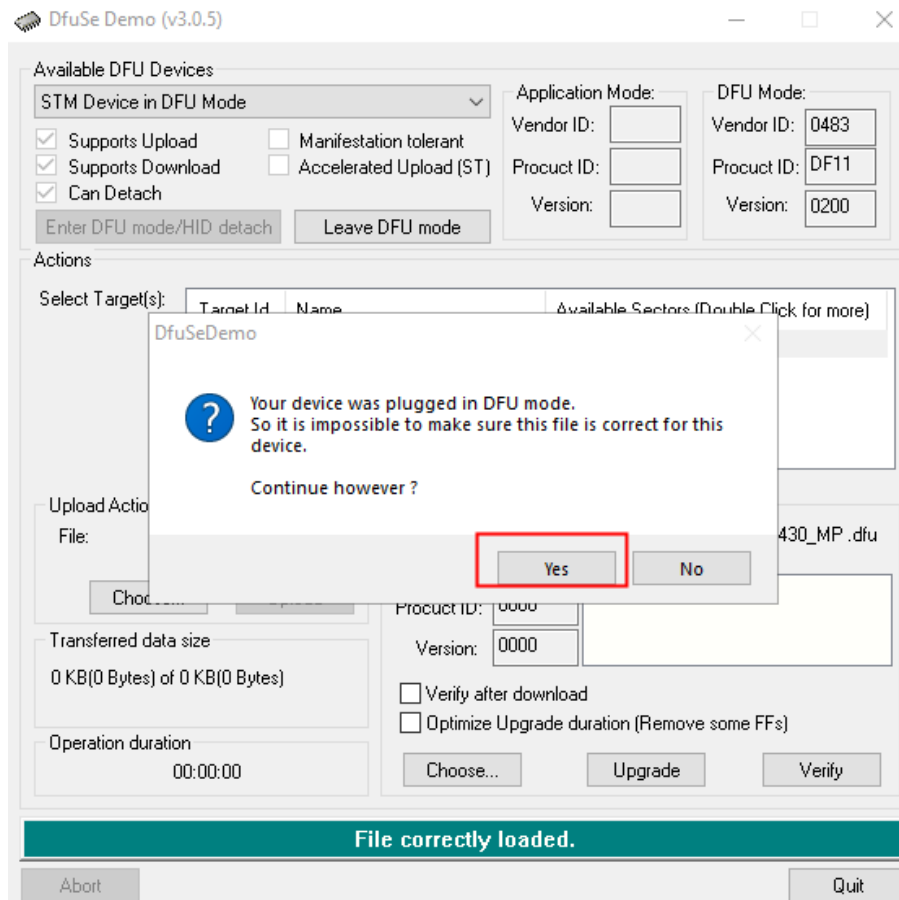
14. Find the firmware in computer (the document suffixed by .dfu), click “open” after selection.



15. Click “Upgrade”.

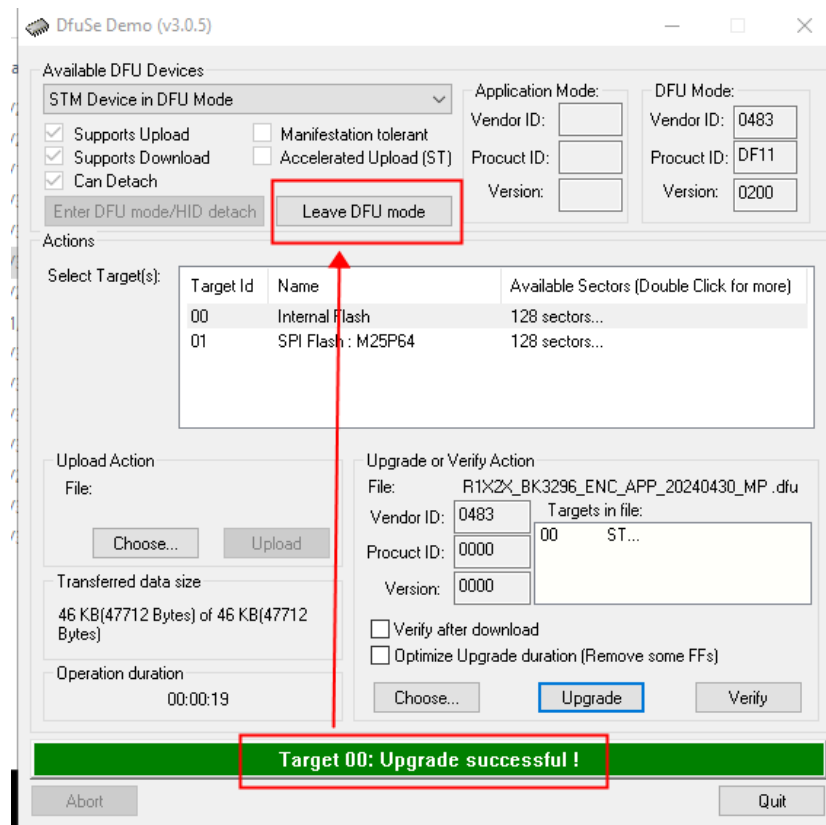


16. Click “Yes” from the pop-up window.



17. It indicates “Upgrade successful” if the firmware upgraded successfully. Now click

“Leave DFU mode”.



18. Until now, the firmware upgraded successfully. The scanner can be powered on to use.