

# How to Use Generalscan DFU Tools

**Ver 1.0**  
**6-24-2024**

# Overview

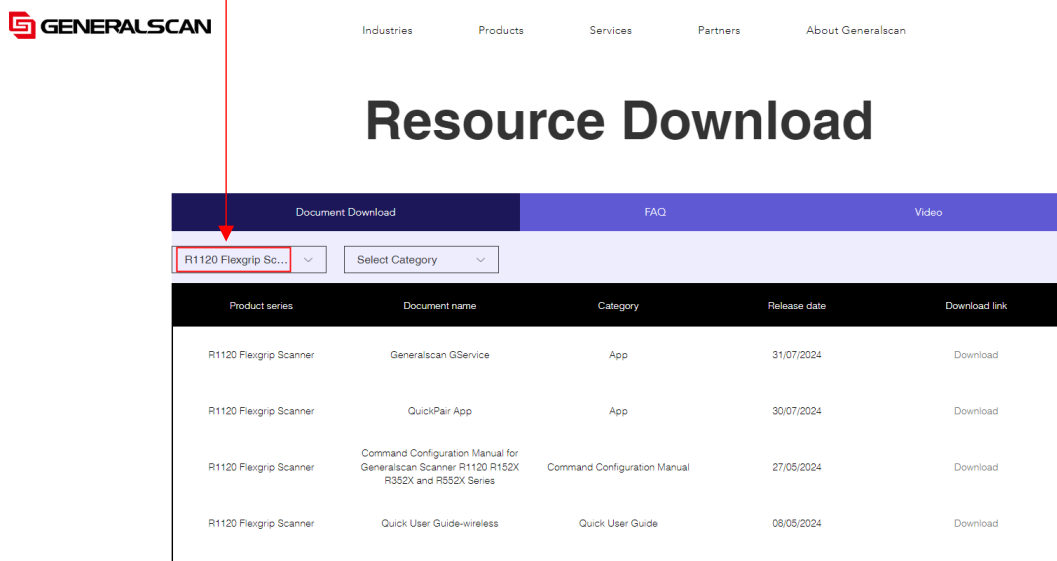
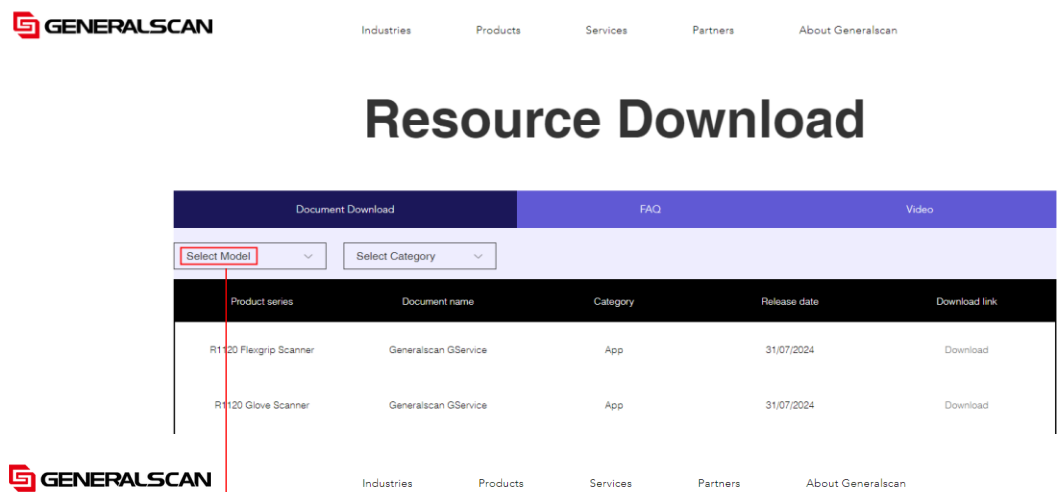
This document is used to guide how to use the app "Generalscan DFU Tools" to upgrade scanner firmware.

## Steps

### 1. Download

1.1 Visit the website link below to download the Ap <https://www.generalscan.cloud/resourcedownload>

1.2 Select firstly the model GS R1120



1.3 Find "Generalscan DFU Tools", and click "Download".

Document Download		FAQ		Video
R1120 Flexgrip So...	Select Category			
Product series	Document name	Category	Release date	Download link
R1120 Flexgrip Scanner	Generalscan GService	App	31/07/2024	Download
R1120 Flexgrip Scanner	QuickPair App	App	30/07/2024	Download
R1120 Flexgrip Scanner	Command Configuration Manual for Generalscan Scanner R1120 R152X R352X and R552X Series	Command Configuration Manual	27/05/2024	Download
R1120 Flexgrip Scanner	Quick User Guide-wireless	Quick User Guide	08/05/2024	Download
R1120 Flexgrip Scanner	Demo SDK for Bluetooth SPP Mode	SDK	18/04/2024	Download
R1120 Flexgrip Scanner	R1120 Engine Configuration Manual	Engine Configuration Manual	17/04/2024	Download
R1120 Flexgrip Scanner	Generalscan VCP Driver	App	10/04/2024	Download
R1120 Flexgrip Scanner	Generalscan DFU Tools	App	02/08/2024	Download
R1120 Flexgrip Scanner	SDK Demo App V1.1.0	App	04/03/2024	Download

## 2. Operations

2.1 Enable scanner DFU mode after power on it by scanning the barcode below (the scanner light indicator blinks blue and green alternately).

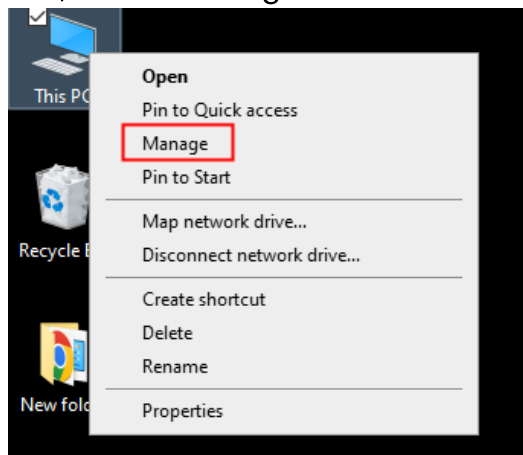


{G1002/22308}

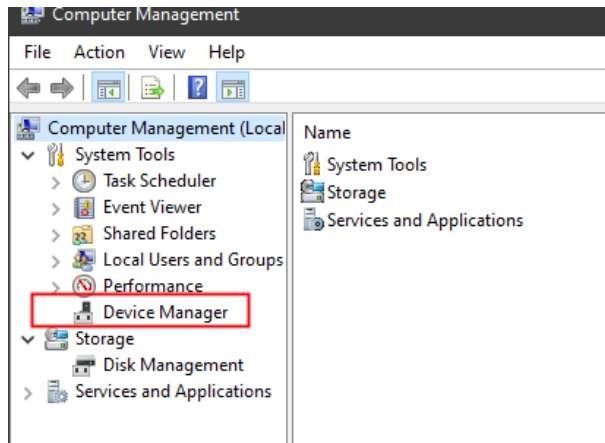
Enter DFU Mode

2.2 Connect the scanner with computer by Type-C cable in the package.

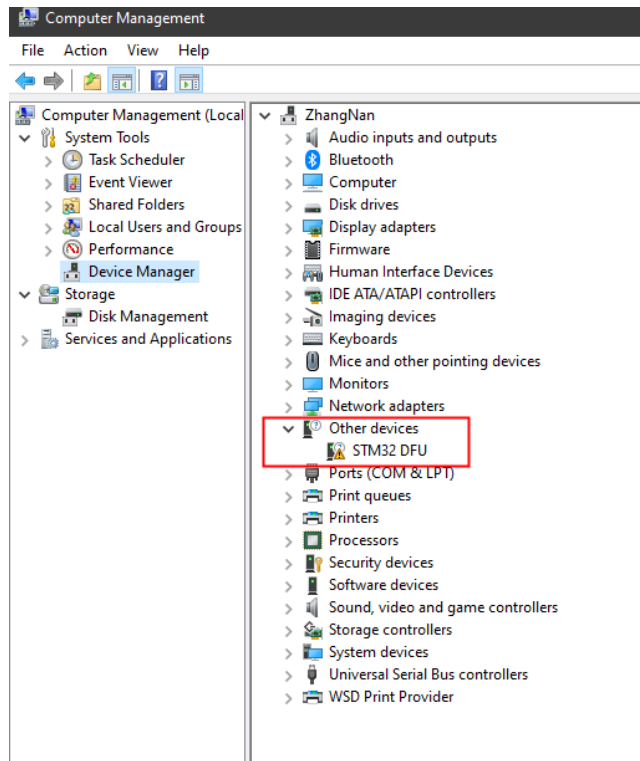
2.3 Right-click "This PC", select "Manage".



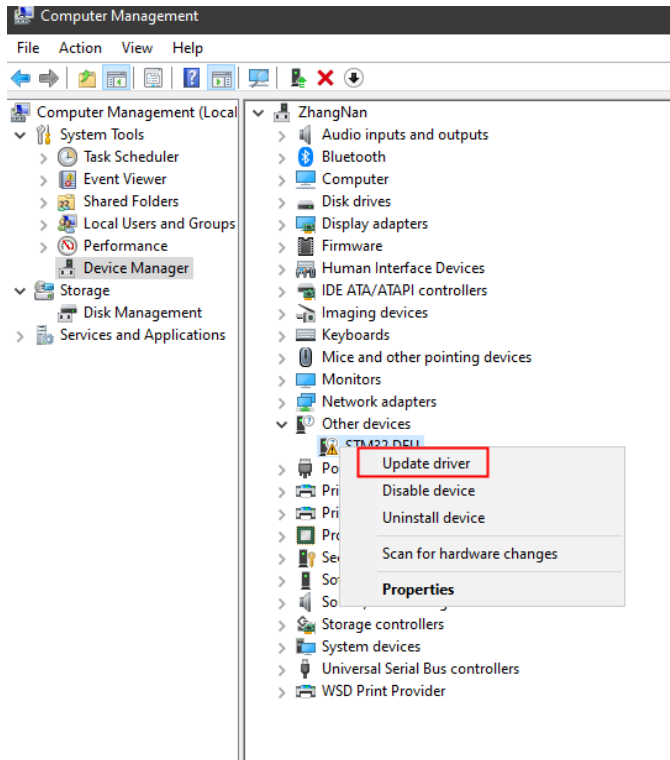
2.4 Then click on "Device Manager".



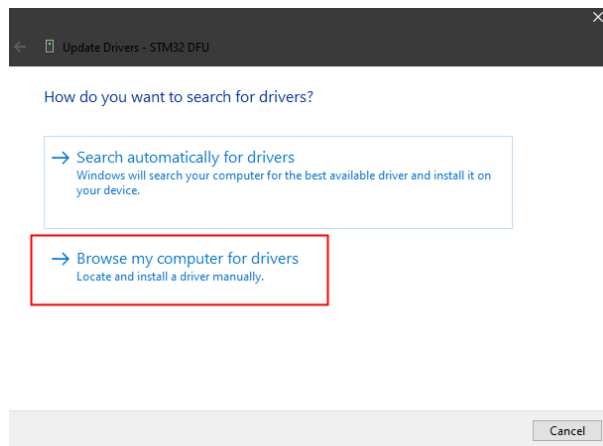
2.5 Find "Other devices" - "STM32 DFU".



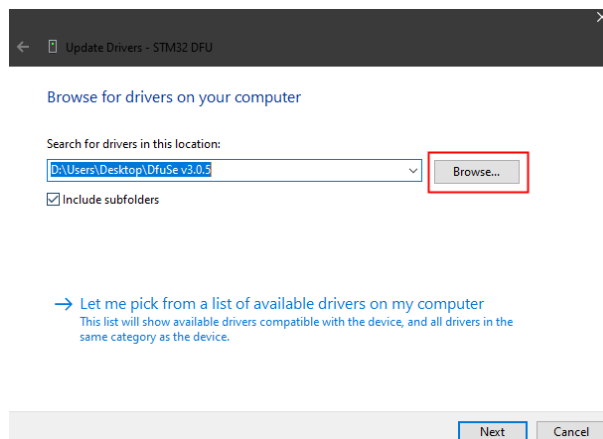
2.6 Right click "STM32 DFU", then select "Update Driver".



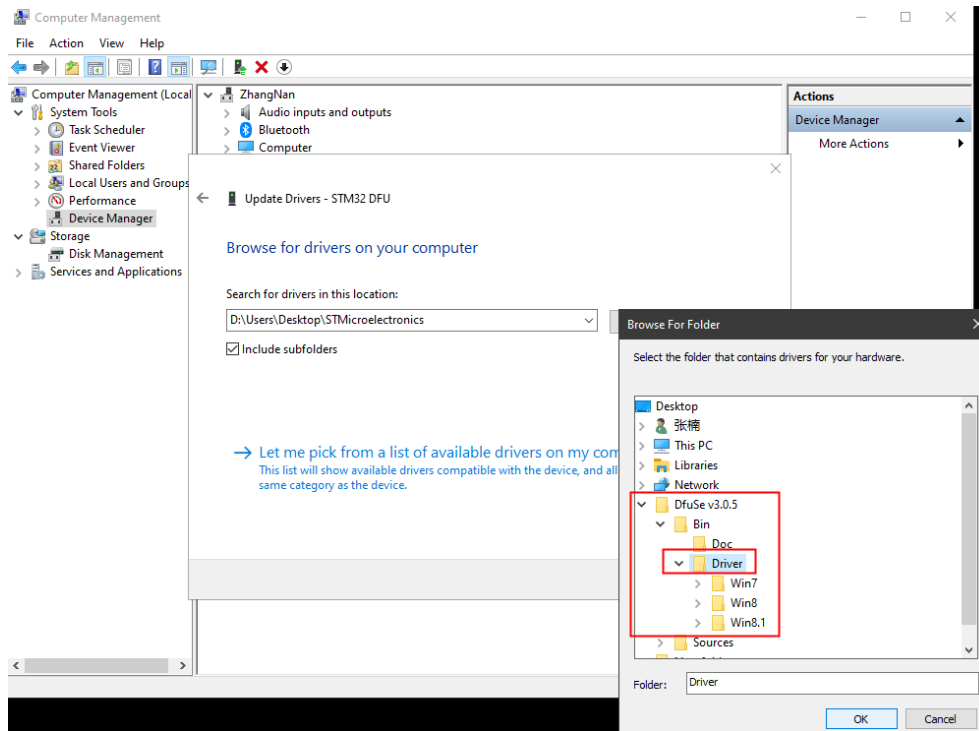
2.7 Select "Browse my computer for drivers" from the pop-up window.



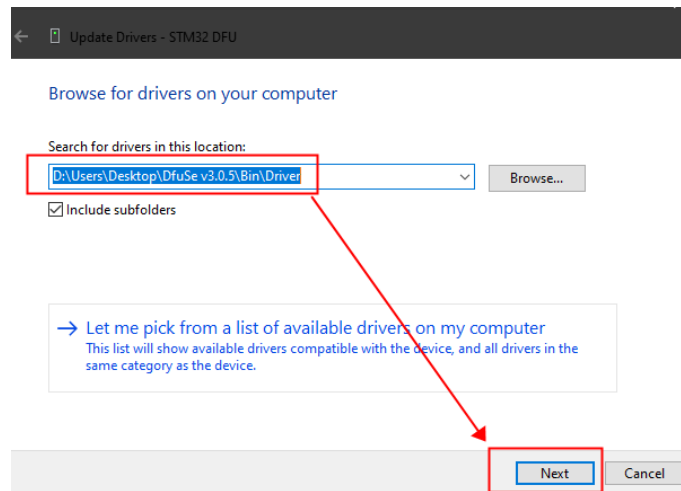
2.8 Click "Browse...".



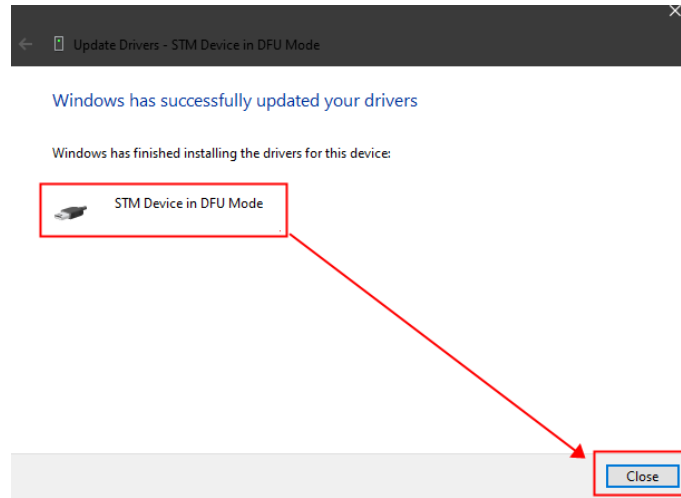
2.9 Find the folder "Driver" within the folder "DfuSe V3.0.5", then click "OK".



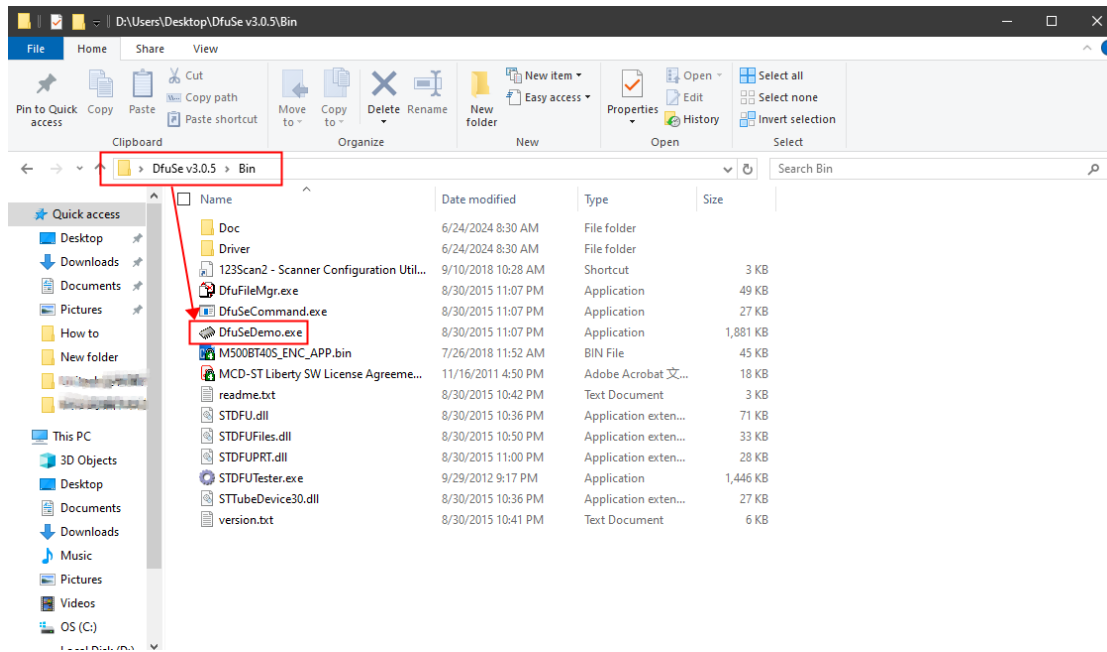
2.10 Then click "Next".



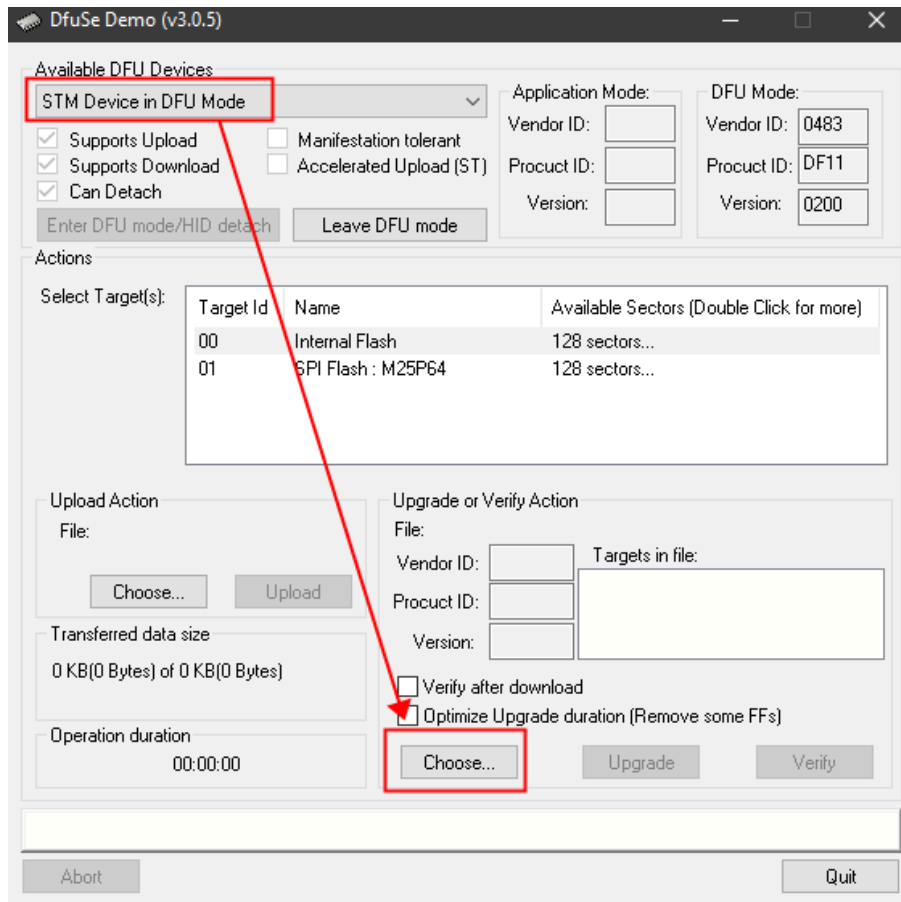
2.11 Now the driver will be installed automatically. Then click "Close" after finishing installation.



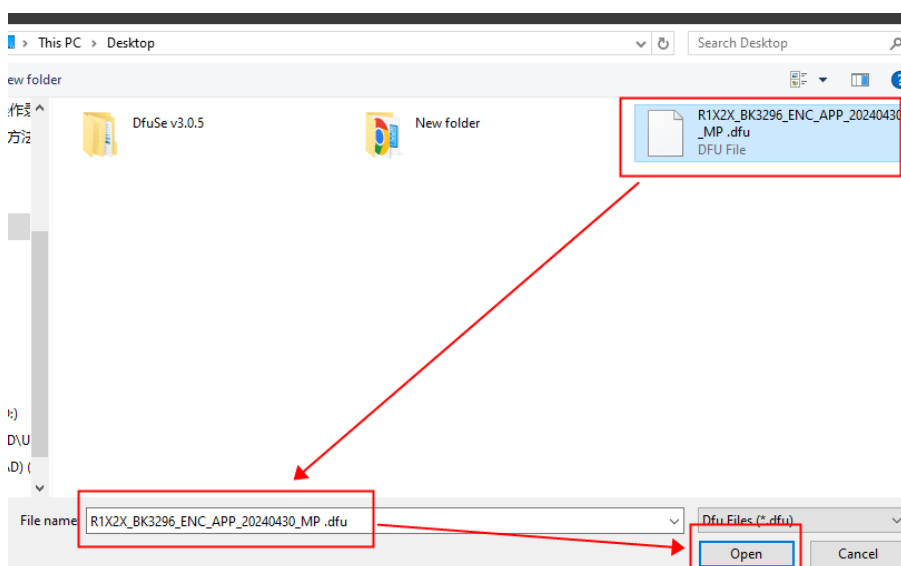
2.12 Open the folder "DfuSe V3.0.5" - "Bin", find "DfuSeDemo.exe", and then double-click on it to open.



2.13 In the pop-up window, it is correct if it shows “STM Device in DFU Mode” at “Available DFU Devices”. Otherwise, please repeat the steps above. Then click “Choose...”.

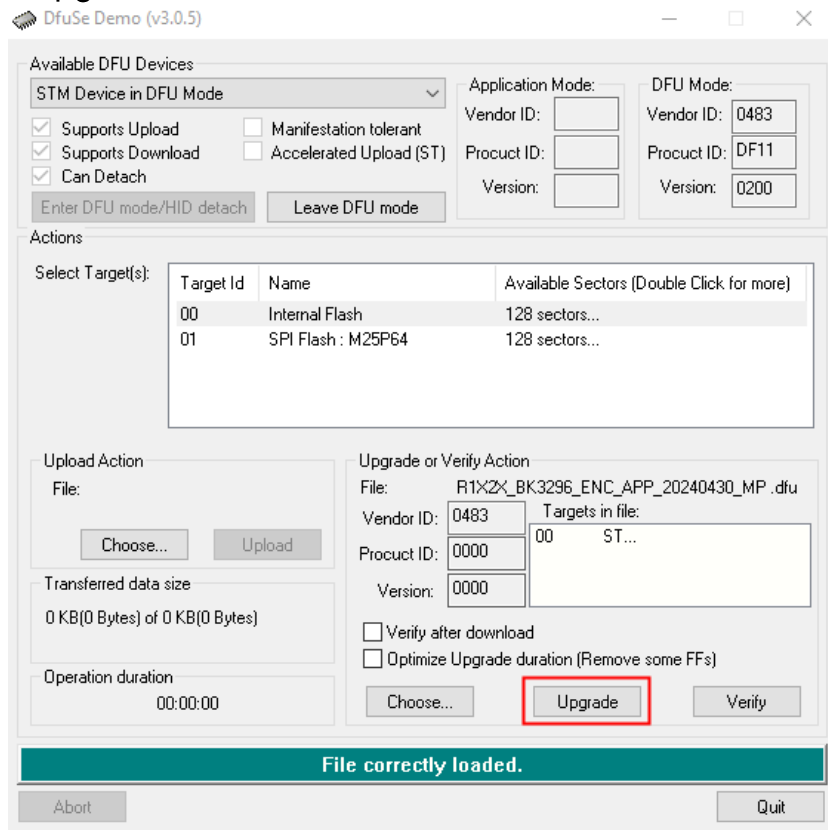


2.14 Find the firmware in computer (the document suffixed by .dfu), click “open” after selection.

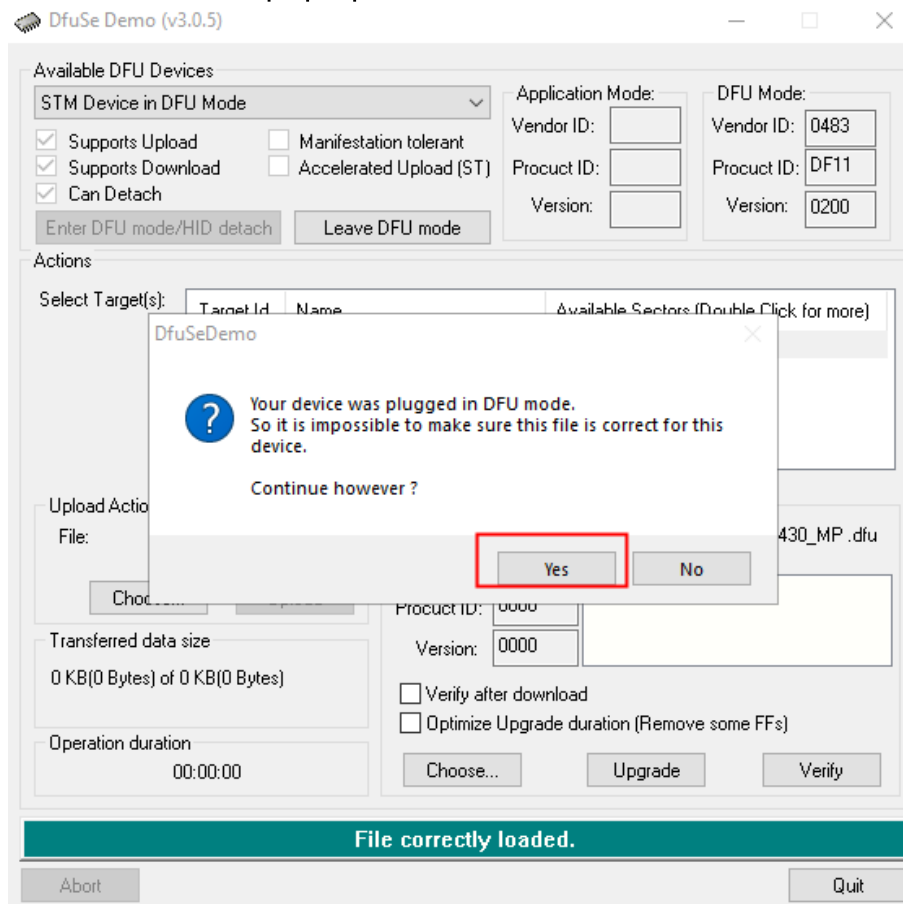




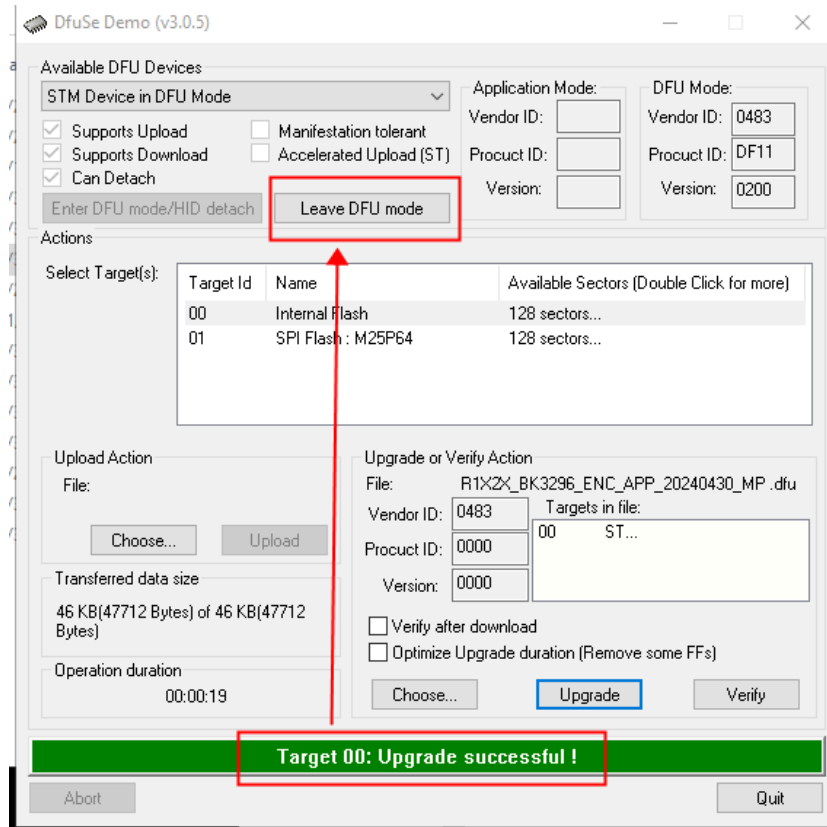
2.15 Click "Upgrade".



2.16 Click "Yes" from the pop-up window.



2.17 It indicates "Upgrade successful" if the firmware upgraded successfully. Now click "Leave DFU mode".



2.18 Until now, the firmware upgraded successfully. The scanner can be powered on to use.