

WT1522 Wearable Armband Glove Scanner



Adaptive Armband AB2200-Adjusts the Side Screws to Make It in Different Widths for Mounting Various Sizes of Mobile Terminals

The AB2200 features a unique design where users can adjust the side screws to alter the width of the armband. This adjustable feature allows the armband to accommodate different sizes of mobile terminals. Users can easily adjust the armband to fit their specific device size, providing a snug and secure attachment. This adaptability is particularly beneficial for individuals who frequently switch between different mobile terminals or have devices with varying dimensions.

Easy-to-Wear Armband AB2000 - Slightly Stick It on and You're Ready to Go!

AB2000 is designed for effortless wearability, allowing users to quickly and easily attach it by simply sticking it on. By requiring minimal effort to put on, the AB2000 enables users to get ready swiftly for their activities without any complicated adjustments. This enhances user convenience, ensuring that users can seamlessly incorporate it into their daily routines without any unnecessary complications.

White LED illumination offers advantages in capturing high-quality images for barcode scanning

The white LED illumination enhances visibility and contrast, allowing the scanner to accurately read barcodes in various lighting conditions. This is particularly useful in environments where consistent and reliable barcode scanning is crucial, such as retail or healthcare applications. The white LED illumination also contributes to energy efficiency and can improve the overall performance of the scanner in terms of speed and precision.

Adjustable Strap Armband - Well Fits a Variety of Arm Sizes

The straps of Generalscan armbands are adjustable, allowing them to fit various arm sizes. They accommodate different user's needs, regardless of their arm thickness or length, by adjusting the strap for a comfortable wearing experience. This adjustable design enhances their versatility and comfort, making them accessible to a wider range of users.

PRODUCT SPECIFICATION

Wearable Armband Glove Scanner WT1522

ARMBAND PARAMETER

Armband Type	AB1800, AB2000, AB2200
Strap Length	Adjustable, 27cm and 38cm are available for AB2200
Armband Direction	360° rotatable
Applicable Screen Size	AB1800 for terminals with 4.0-6.5 inch screens AB2000 is suitable for screens of any size AB2200 for terminals with 4.7-7.2 inch screens
Armband Material	AB1800 - Silicone, PU, Webbing AB2000 - ABS, PU, Polyester AB2200 - PC, ABS, Webbing

SCANNER PHYSICAL PARAMETER

Dimensions	66.54mm(L) × 34.73mm(W) × 25.16mm(H)
Weight	28.3g(Scanner body)
Notification	LED, Buzzer, Vibration

INTERFACE

USB Interface	USB Type-C
Coiled Cable	Both ends Type-C connector, 165mm
USB Protocol	USB HID Keyboard, USB VCP (Virtual Serial Port)
Multilingual Keyboards	USB HID mode supports multilingual keyboards

USER ENVIRONMENT

Ambient Light	Max 100000lux (direct sunlight)
Operating Temperature	-10°C~50°C
Storage Temperature	-10°C~50°C
Humidity	5% - 85% non-condensing
Drop Spec.	Multiple 4.9ft./1.5M drops to concrete
Tumble Spec.	Scanner body withstands 20,000 times from 3.3ft./1M with frequency of 10 times per minute.
Electrostatic Discharge (ESD)	±8kv dc discharge, ±15kv air discharge
Certificates	RoHS, NOM, EAC

PERFORMANCE CHARACTERISTICS

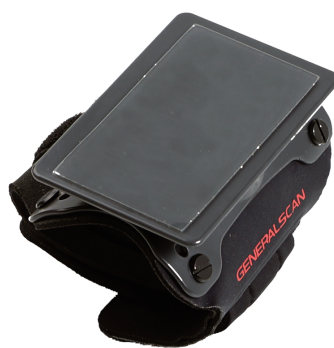
Optical Resolution	640×480 pixels
Shutter	Global Shutter
Sensor	2D CMOS Image
Skew, Pitch & Roll	Skew tolerance: ±50° from normal Pitch tolerance: ±50° from normal Roll tolerance: 360° from normal
Field of View	Horizontal 20°, Vertical 15°
Illumination	White LED
Aiming	Red LED
Supported Symbologies	Codabar, Code39, Trioptic, Interleaved2 of 5, FEBRA-BAN, 1D: NEC 2 of 5, Code 93, Matrix 2 of 5, Code 11, Code 128, Telepen, UPC-A, UPC-E0, UPC-E1, EAN/JAN-13, EAN/JAN-8, MSI, GS1 DataBar, Codablock A, Codablock F, PDF417, Macro PDF417, GS1 Composite Codes, GS1 2D: Emulation, TLC39, QR, DotCode, Digimarc Barcode, Dta Matrix, Grid Matrix, Maxicode, Aztec, Han Xin, Postal

DECODE RANGES

5 mil Code 39	45.0 - 180.0MM
10 mil Code 39	36.0 - 360.0MM
20 mil Code 39	71.0 - 747.0MM
5 mil Code 128	56.0 - 158.0MM
10milCode 128	33.0 - 321.0MM
20milCode 128	53.0 - 598.0MM
100% UPCA	46.0 - 390.0MM
7 mil PDF417	55.0 - 163.0MM
10 mil PDF417	42.0 - 247.0MM
20 mil PDF417	81.0 - 490.0MM
7 mil QR	70.0 - 125.0MM
10 mil QR/Data Matrix	40.0 - 182.0MM
20 mil QR	36.0 - 367.0MM



AB1800



AB2200



AB2200

GENERALSCAN

Generalscan Inc.

200 Buckelew Ave, Jamesburg,
NJ 08831, USA
+1 732 895 6821

Generalscan Electronics GmbH

Hochstraße 42, 52525
Heinsberg Germany
+49 1516 7161256

Generalscan LLC

Calle San Luis Potosi 51,
Roma Norte 06700,
Ciudad de México
+52 5552727861

GENERALSCAN ELEKTRONIK VE TEKNOLOJI SAN. VE TIC. LTD. ŞTİ.

FSM Mah. Siir Sk. Relux Plaza No 10,
Ümraniye 34764,
İstanbul, Turkey
+90 542 478 5873