

# WT5521 Wearable Armband Ring Scanner



## **Plug-and-Play, No Bluetooth Pairing Process**

The Type-C cable secures a dependable and steady link between the scanner and your mobile device, reducing the chances of data interruptions or connectivity glitches. Featuring a reversible plug setup, the Type-C connector streamlines the insertion procedure, ensuring effortless connections and enabling high-speed data transfers for quick and effective communication.

## **Stable Armband AB1800 - The Silicone Strap on AB1800 is Adjustable to Fit a Variety of Mobile Terminals**

The silicone strap of AB1800 makes it suitable for securing a variety of mobile terminals. The silicone material fits securely around smartphones or other mobile devices of all sizes, ensuring fit and stability and preventing slippage during movement. The AB1800 armband's ability to adapt to different sizes of mobile devices makes it a practical accessory for those who use different devices or wish to change to a different device.

## **Flexible Armband AB2000- Adapts to Any Mobile Terminals Simply by Sticking Their Protective Case on It**

The AB2000's direct affix design allows users to securely attach their mobile devices to the armband without any additional adjustments or modifications. Furthermore, the ability of AB200 to seamlessly integrate with different protective cases makes it a practical and adaptable accessory for users seeking a hands-free solution for carrying their mobile devices.

## **With Dual-core Hardware PL5000 Decoder, It can Decode in Record Time, Even on Damaged, Poorly Printed and Low Contrast Barcodes or in Poor Lighting**

The PL5000 hardware decoder boosts worker productivity with unmatched decode times, superior motion tolerance, plus advanced barcode and data capture processing features, plus support for the newest barcode symbologies.

## PRODUCT SPEC SHEET

### Wearable Armband Ring Scanner WT5521

#### ARM BAND PARAMETER

Armband Type	AB1800, AB2000, AB2200
Strap Length	Adjustable, 27cm and 38cm are available for AB2200
Armband Direction	360° rotatable
Applicable Screen Size	AB1800 for terminals with 4.0-6.5 inch screens AB2000 is suitable for screens of any size AB2200 for terminals with 4.7-7.2 inch screens
Armband Material	AB1800 - Silicone, PU, Webbing AB2000 - ABS, PU, Polyester AB2200 - PC, ABS, Webbing

#### SCANNER PHYSICAL PARAMETER

Scanner Dimensions	70.00mm(L) × 36.00mm(W) × 26.80mm(H)
Scanner Weight	37g (scanner body)
Notification	LED, Buzzer, Vibration

#### USER ENVIRONMENT

Ambient Light	Max 107639lux (direct sunlight)
Operating Temperature	14°F ~ 122°F / -10°C~50°C
Storage Temperature	14°F ~ 122°F / -10°C~50°C
Humidity	5% - 85% non-condensing
Drop Spec.	Multiple 4.9ft./1.5M drops to concrete
Tumble Spec.	Scanner body withstands 20,000 times from 3.3ft./1M with frequency of 10 times per minutes.
Electrostatic Discharge (ESD)	±8kv dc discharge, ±15kv air discharge
Certificates	RoHS, NOM, EAC

#### INTERFACE

USB Interface	USB Type-C
Coiled Cable	Both ends Type-C connector, 165mm
USB Protocol	USB HID Keyboard, USB VCP (Virtual Serial Port)
Multilingual Keyboards	USB HID mode supports multilingual keyboards

#### PERFORMANCE CHARACTERISTICS

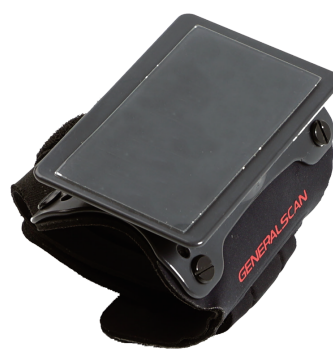
Optical Resolution	1280 x 800 pixels
Shutter	Rolling shutter
Sensor	2D CMOS Image
Skew, Pitch & Roll	Skew tolerance: ±60° from normal Pitch tolerance: ±60° from normal Roll tolerance: 360° from normal
Field of View	Horizontal 48°, Vertical 30°
Illumination	White LED
Aiming	Red Cross Laser
Supported Symbolologies	1D: Code39, Code128, Codabar, Code11, UPC/EAN, Interleaved 2 of 5, Discrete 2 of 5, Chinese 2 of 5, Matrix 2 of 5, Korean 3 of 5, GS1 Databar, Code93, MSI, Composite 2D: PDF417, Postal CodesMicro PDF, Micro PDF417, Code128 Emulation, Aztec, Data Matrix, GS1 Data Matrix, QR Code, GS1 QR, Maxicode, Micro QR, Han Xin, Grid Matrix, DotCode, OCR

#### DECODE RANGES

3 mil Code 39	3.0in. - 5.8in. /76 mm - 147 mm
5 mil Code 128	2.3in. - 9.8in. /58 mm - 249 mm
5 mil PDF417	2.5in. - 10.1in. /64 mm - 257 mm
6.67 mil PDF417	3.0in. - 7.9in. /76 mm - 201 mm
10 mil DataMatrix	2.1in. - 11.0in. /53 mm - 279 mm
100% UPCA	1.6in. - 24.9in. /41mm - 632 mm
15 mil Code 128	2.4in. - 27.8in. /61 mm - 706 mm
20 mil Code 39	1.6in. - 36.1in. /41 mm - 917 mm



AB1800



AB2200



AB2200

## GENERALSCAN

#### Generalscan Inc.

200 Buckelew Ave, Jamesburg,  
NJ 08831, USA  
+1 732 895 6821

#### Generalscan Electronics GmbH

Hochstraße 42, 52525  
Heinsberg Germany  
+49 1516 7161256

#### Generalscan LLC

Calle San Luis Potosi 51,  
Roma Norte 06700,  
Ciudad de México  
+52 5552727861

#### GENERALSCAN ELEKTRONIK VE TEKNOLOJİ SAN. VE TİC. LTD. ŞTİ.

FSM Mah. Siir Sk. Relux Plaza No 10,  
Ümraniye 34764,  
İstanbul, Turkey  
+90 542 478 5873