

# How to Configure keyboard layout?

Applicable to GS R1120, R152X, R352X, and R552X series

**Ver 2.0**

**May 6<sup>th</sup>, 2024**

## Overview

This document is used for introducing the configuration methods of keyboard layout on terminal device when scanner connect with them.

# Content

Scenario I	Scanner + Computer(Windows System) .....	3
Scenario II	Scanner + Mobile Phone(Android System) .....	10
Scenario III	Scanner + Mobile Phone(IOS System) .....	15
Scenario IV	Scanner + Wired Flexgrip + Computer.....	19
Scenario V	Scanner + wireless Flexgrip + Computer .....	21
Scenario VI	Scanner + Bluetooth Adaptor + Computer.....	23

## Scenario - I

# Bluetooth Scanner Connects Computer (Windows System) with Bluetooth HID Mode



### 1. Settings for Bluetooth Scanner

Connect Windows computer with **Bluetooth HID Mode**

Please scan the Bluetooth HID mode barcode to pair the scanner with Windows system computer with build-in Bluetooth.



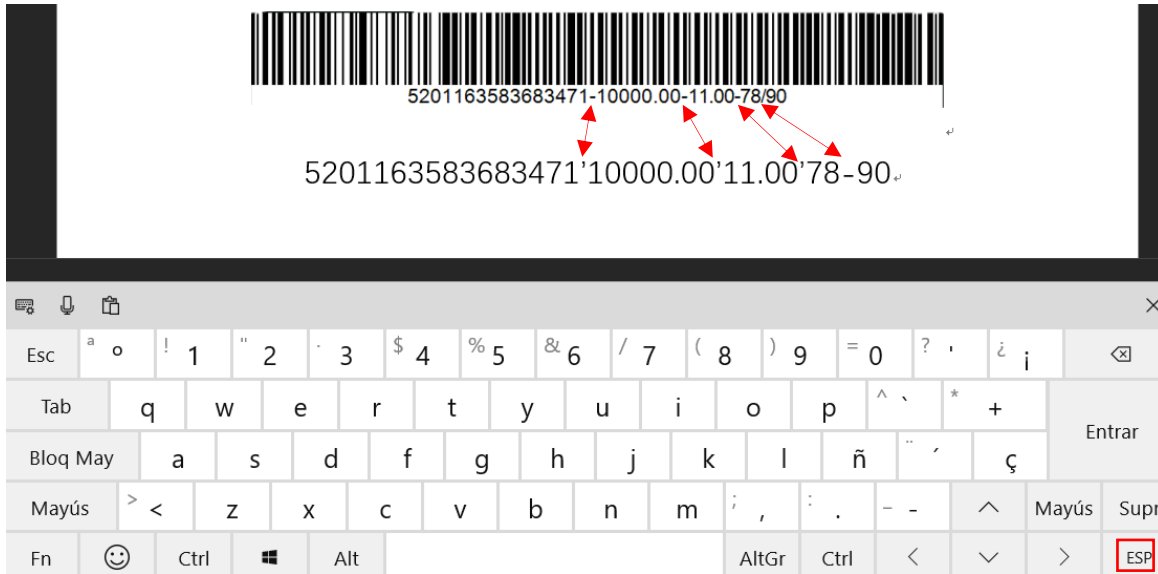
STX 0000007 ETX  
Bluetooth HID Mode

### 2. Settings for Windows Computer

There are two ways to set up different keyboard layouts on windows computer. Chapter 2.1 describes how to change the keyboard layout of the software input method from native language to English. Chapter 2.2 describes how to change the output keycode of scanner by just scanning a barcode without changing the keyboard layout of software input method manually.

#### 2.1 Set keyboard layout on a windows computer.

Just take Spain keyboard layout as an example. Because the actual output data format of the barcode is matched with English keyboard layout, under Spain keyboard layout, the output data format of the barcode does not match with the actual barcode content, as shown in the following screenshot - You will find that the dash character is replaced by single quote. If you want to get barcode output data in correct format, you have to set the keyboard layout to English keyboard layout.

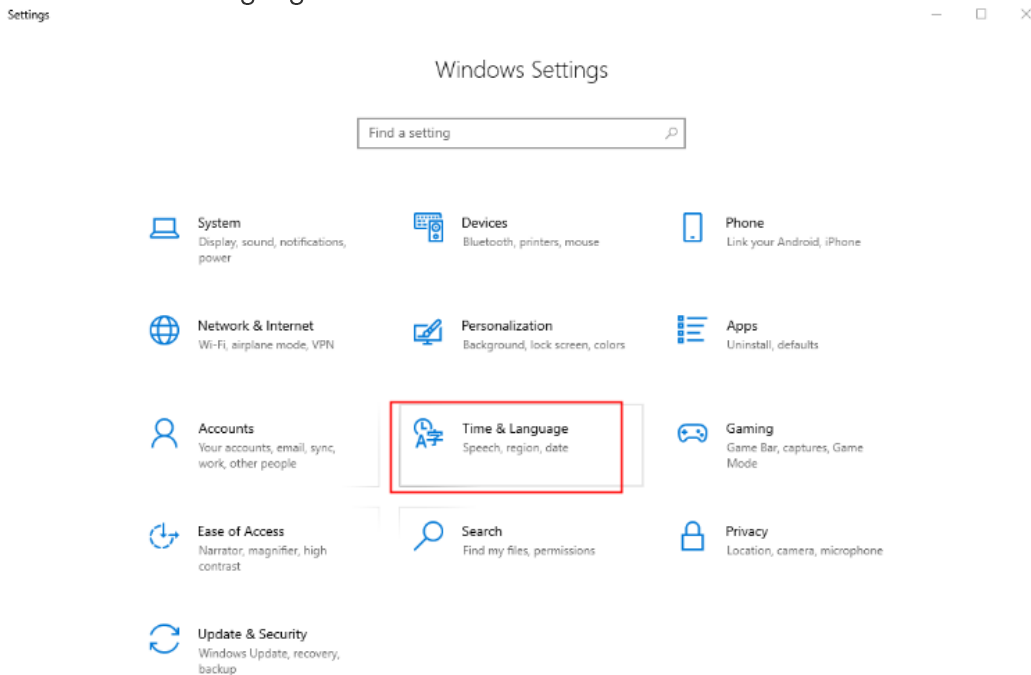


Next, we will show you how to set keyboard layout of windows computer step by step.

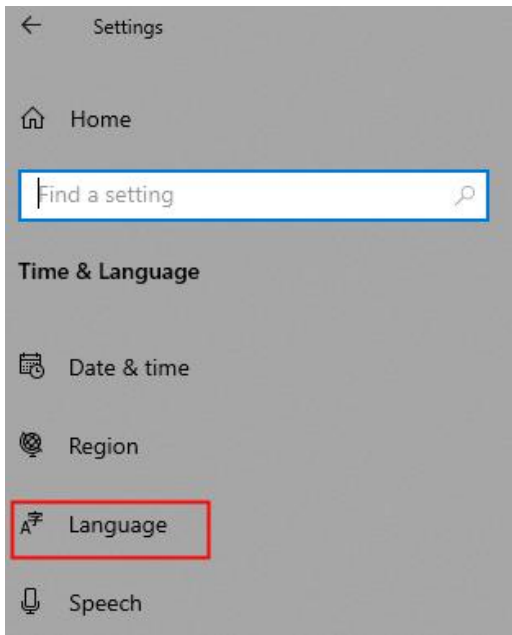
a. Click to open "Settings" from computer (icon is as below).



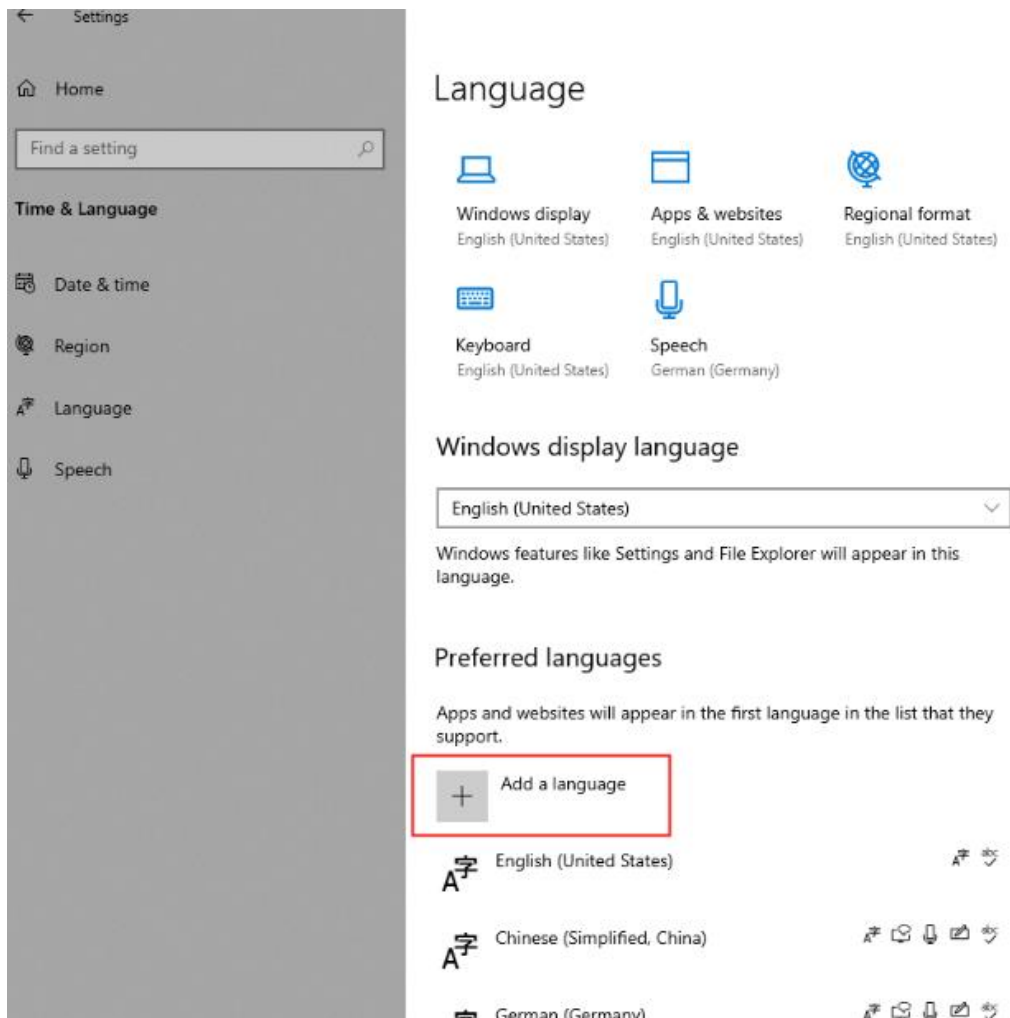
b. Select "Time & Language".



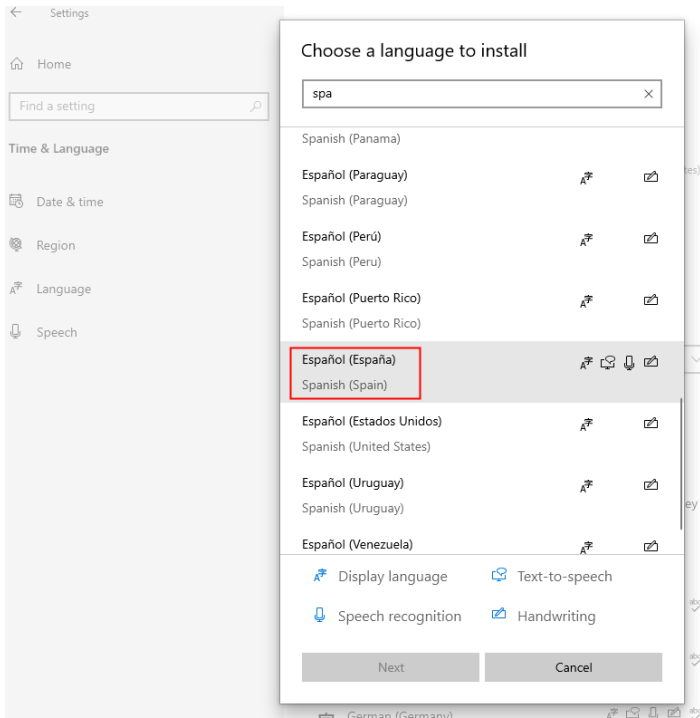
c. Select "Language".



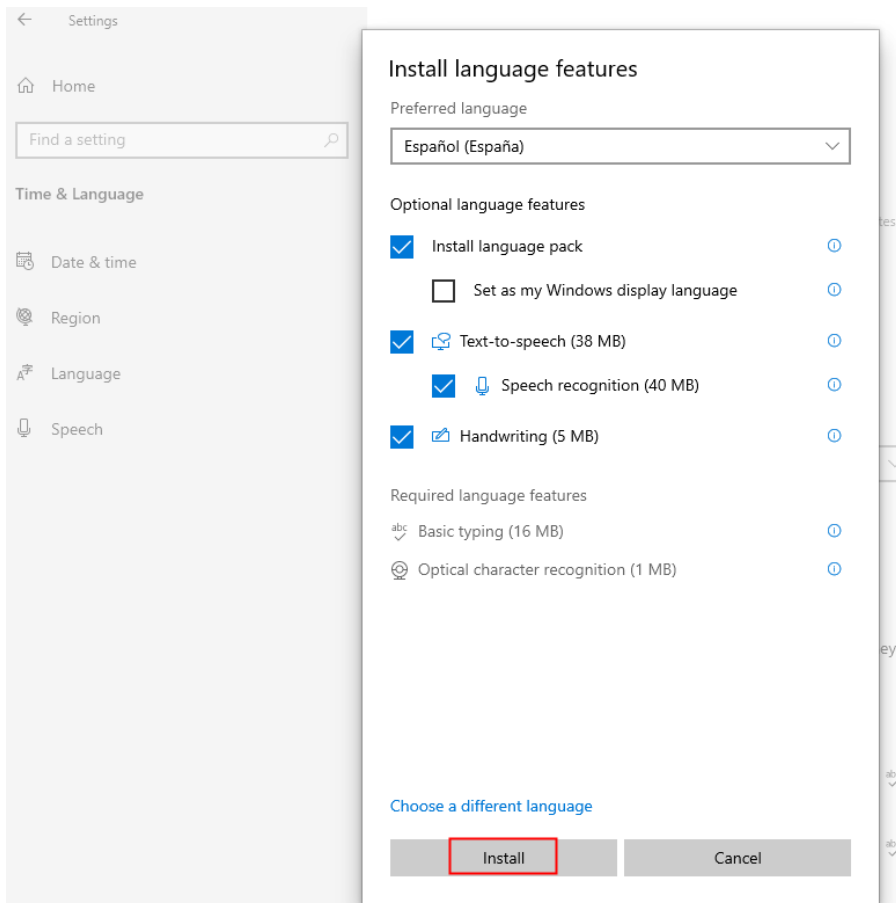
d. Select "Add a language". Please add your native language, if you already have, please skip this step.



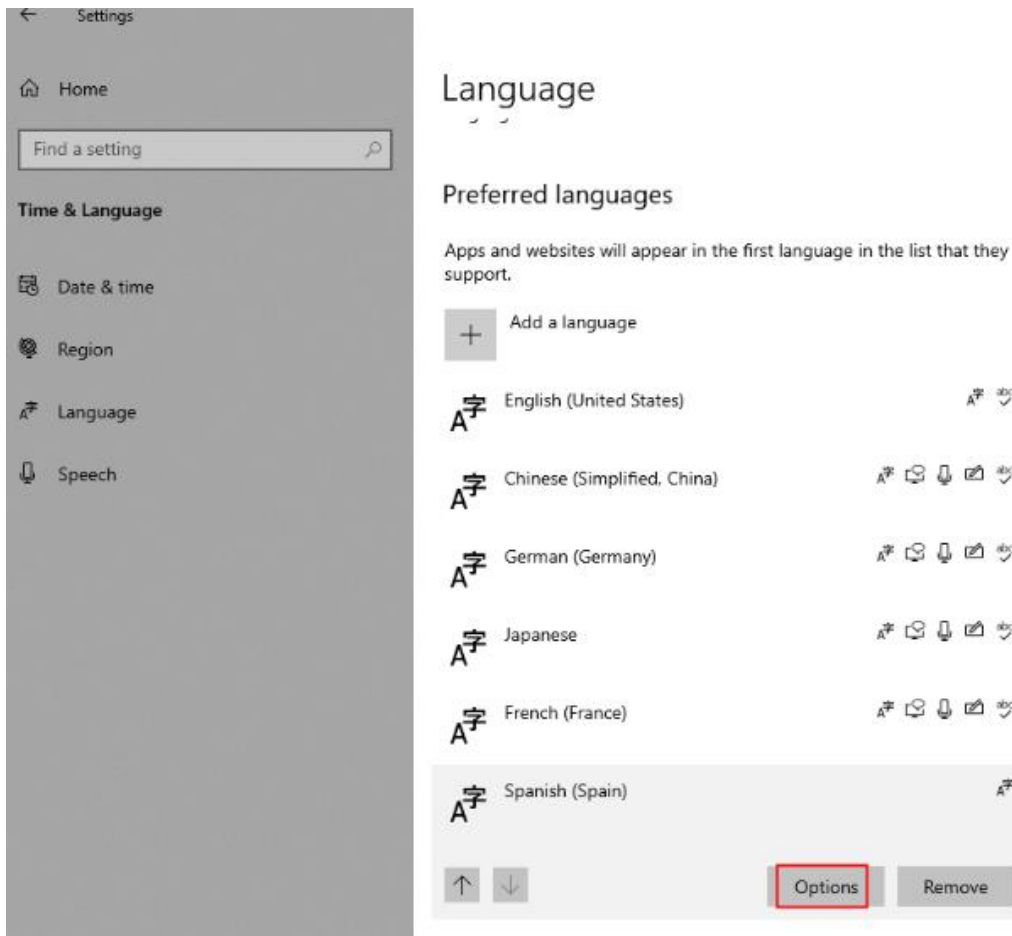
e. Choose the target language and click "Next".



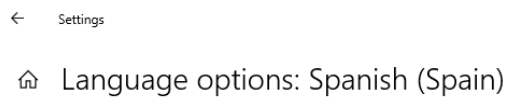
f. Click "install" to complete the Spain keyboard layout.



g. Select the new-added "Spanish", then click "Options". This step, you will add the new keyboard layout to this language.



h. Click "Add a keyboard".



Handwriting

Download (5 MB)  
Handwriting installed

Speech

Download (78 MB)

Regional format

[Settings](#)

Keyboards

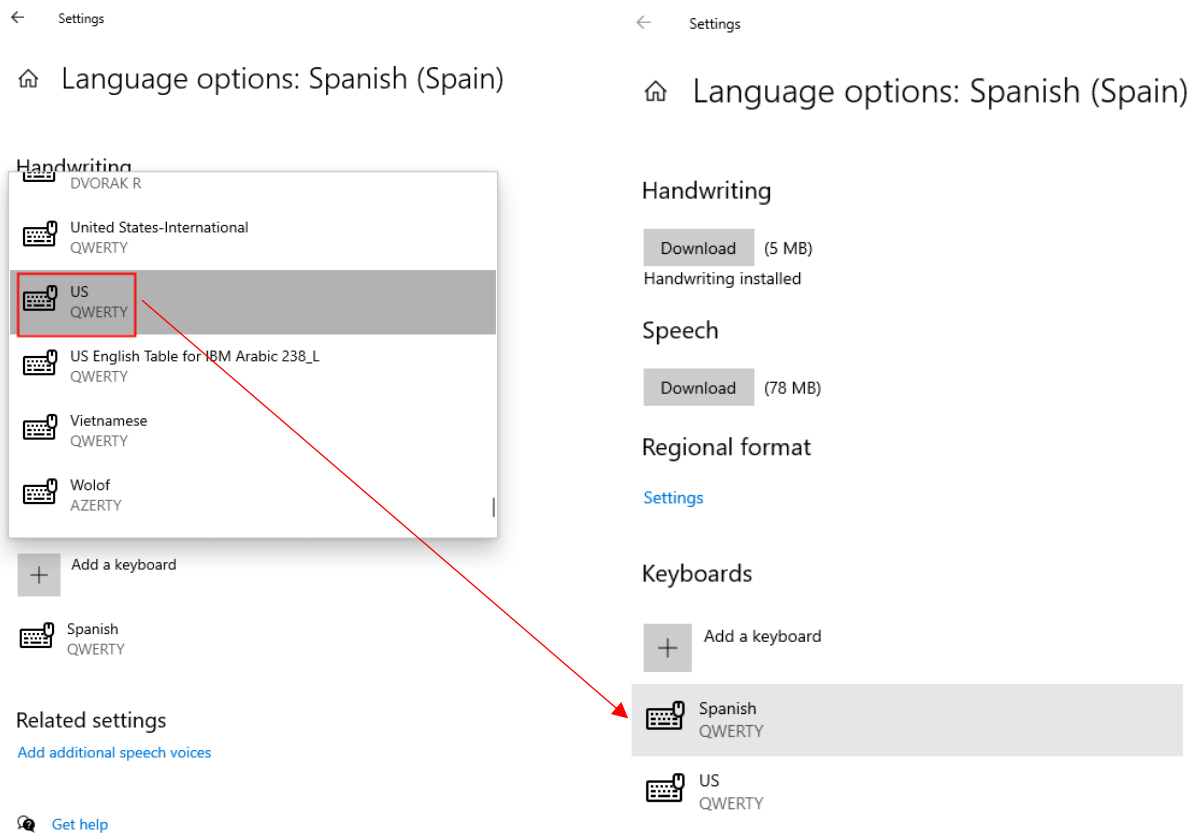
+ Add a keyboard

Spanish QWERTY

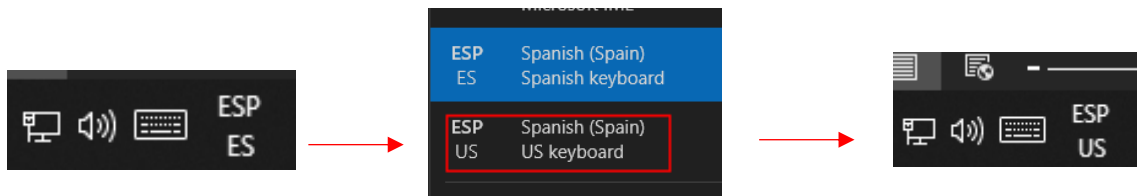
Related settings

[Add additional speech voices](#)

i. Please add new "US" keyboard and you will have two language keyboards, one is Spanish, another one is English.



j. Please switch the keyboard from "Spanish (Spain) Spanish Keyboard" to "Spanish (Spain) US Keyboard" when data needs to be transferred by scanning barcode using a scanner.



k. Now with the setting of Spanish US Keyboard layout the barcode content is the same with the actual content.





2.2 The keyboard layout can be set by scanning the barcode below (ex. the keyboard layout is Germany, please scan the "German Keyboard") (Suggested). With this method, you don't have to switch keyboard input manually.



{G2108/0}

English Keyboard \*



{G2108/1}

French Keyboard



{G2108/2}

German Keyboard



{G2108/3}

Spanish Keyboard



{G2108/4}

Italian Keyboard



{G2108/5}

Portuguese Keyboard



{G2108/6}

Japanese Keyboard



{G2108/7}

Swiss German Keyboard

## Scenario- II Bluetooth Scanner Connect with Android Mobile Phone



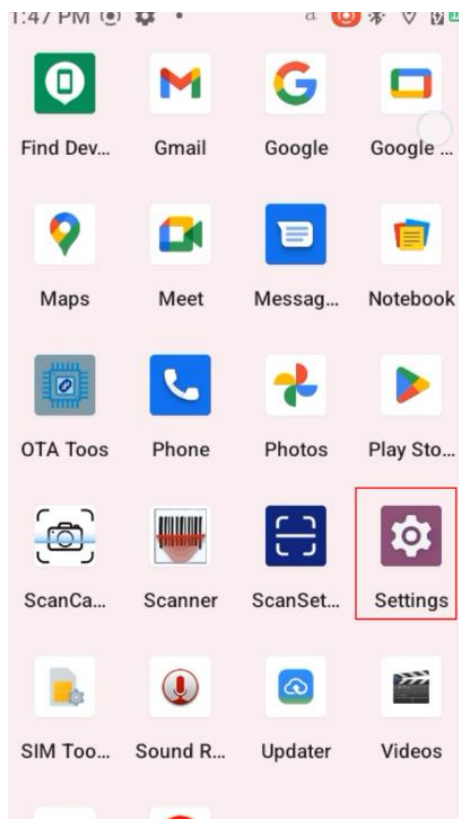
Connect Generalscan Bluetooth scanner by Bluetooth HID Mode with Android device.  
Please scan the following barcode to set the scanner as Bluetooth HID mode.



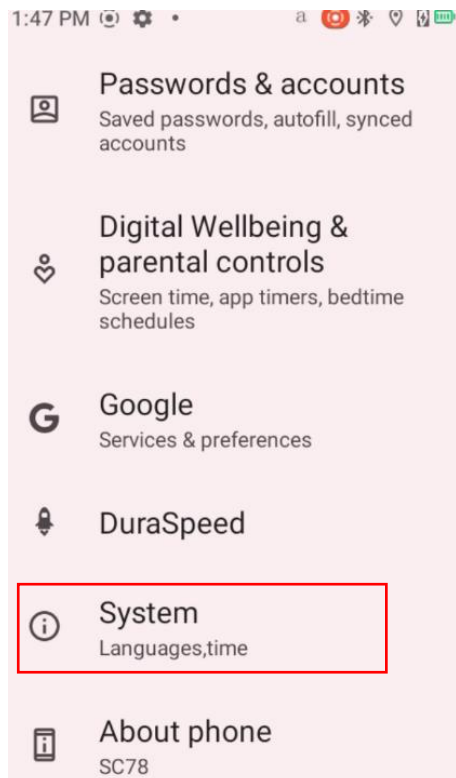
STX 0000007 ETX  
Bluetooth HID Mode

1. When you connect Generalscan Bluetooth HID scanner with Android device, the scanner will be working like physical Bluetooth keyboard in the Android system. So please make sure the physical keyboard layout should be setting with English keyboard layout.
  - 1.1 First, please Pair scanner with mobile phone with Bluetooth HID mode (the scanner tested is "R5524").

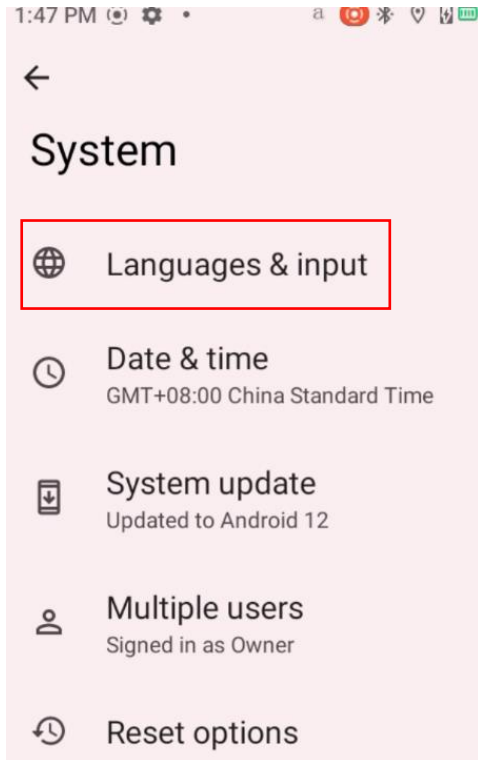
1.2 Select "Settings" after turning on mobile phone.



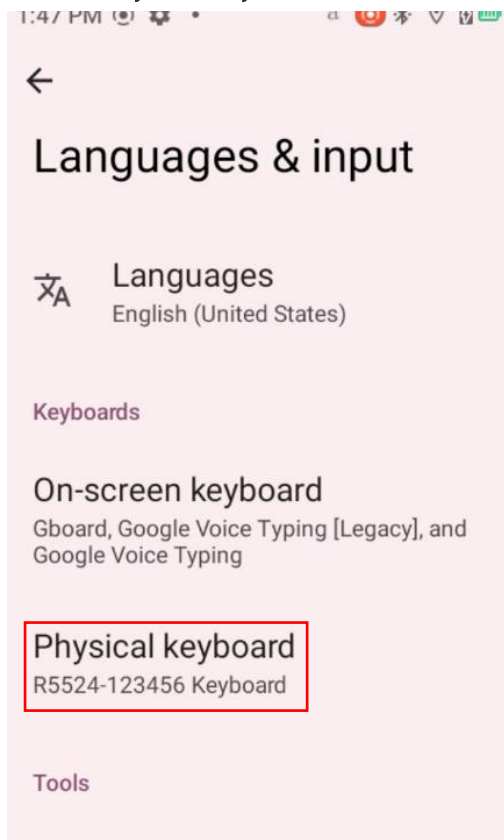
1.3 Select "System".



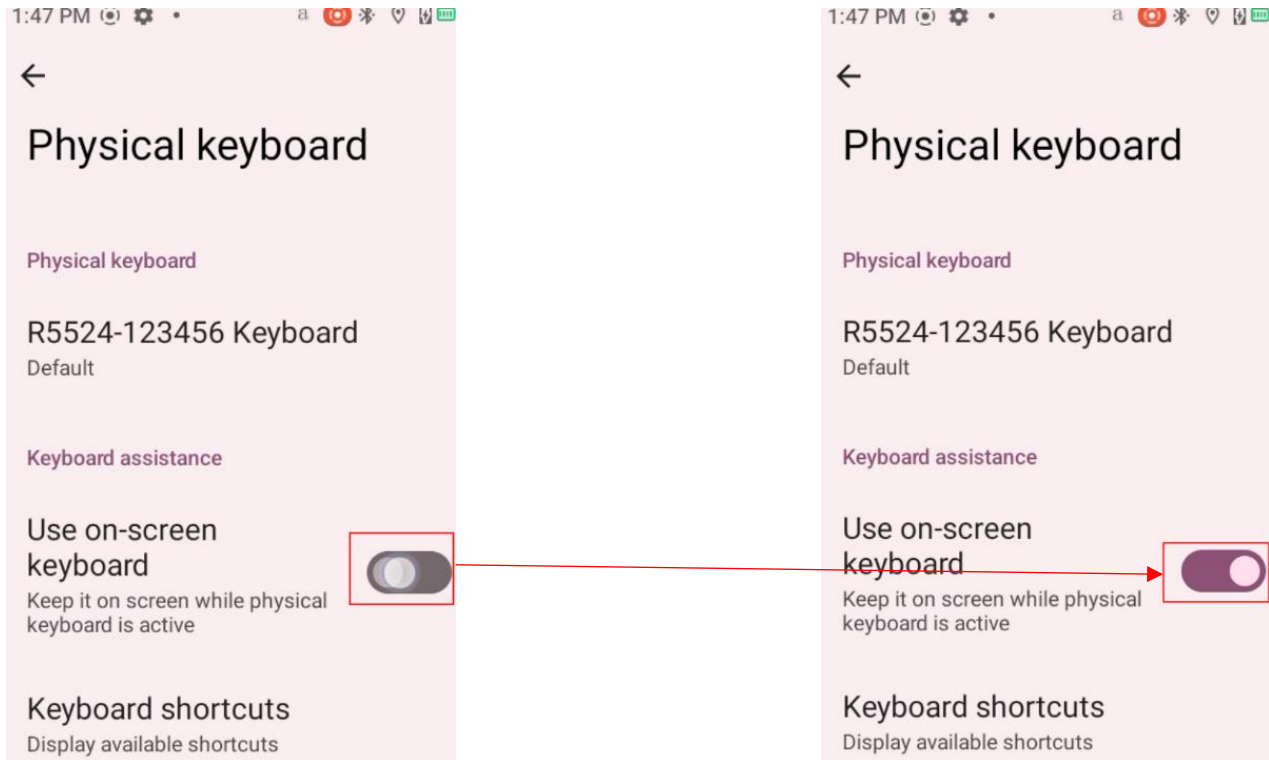
1.4 Select "Languages & input".



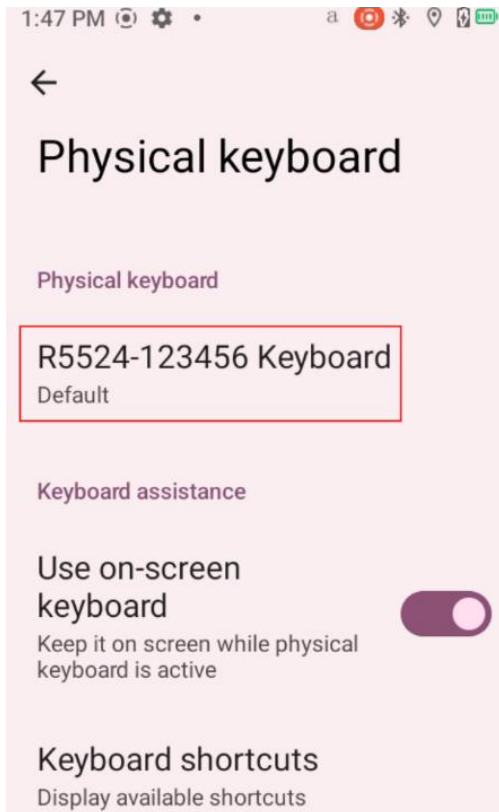
1.5 Select "Physical keyboard".



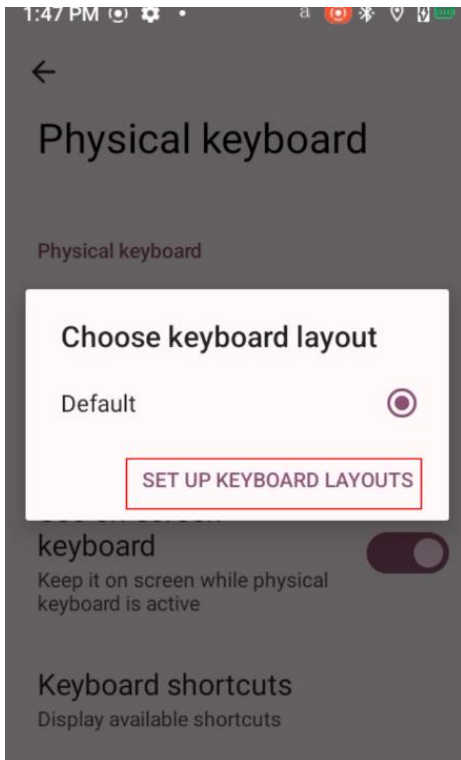
1.6 Enable "Use on-screen keyboard". This will enable the on-screen software keyboard when you connect the physical bluetooth scanner .



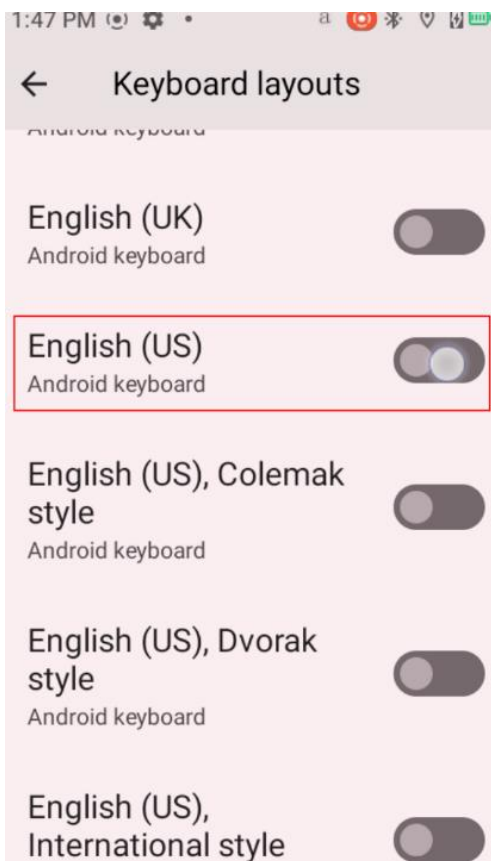
1.7 Select the connected scanner "R5524-123456 keyboard" (the scanner tested is "R5524").



1.8 Select "SET UP KEYBOARD LAYOUTS".



1.9 Enable "English (US) " (Configuration complete, exit and ready for use).



### Scenario- III

## Bluetooth Scanner connect iOS Mobile Phone with Bluetooth HID Mode

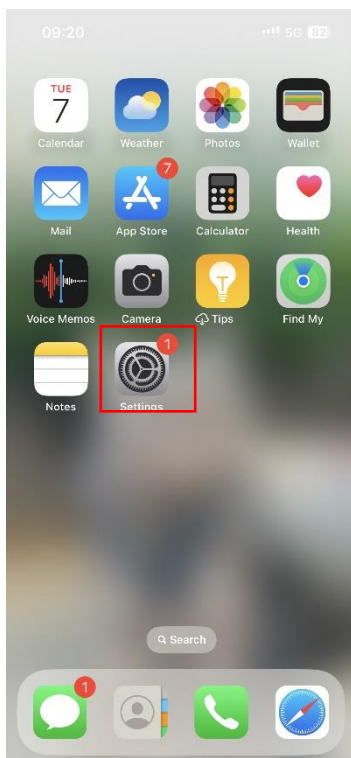


1. Scan the following barcode to enable scanner working with Bluetooth HID Mode.

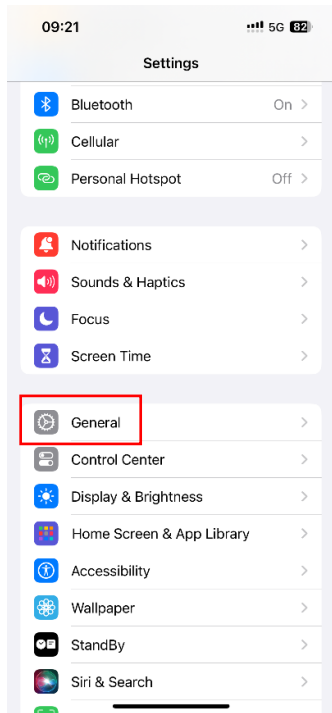


STX 00000007 ETX  
Bluetooth HID Mode

2. When you connect Generalscan Bluetooth HID scanner with iOS device, the scanner will be working like physical Bluetooth keyboard in the iOS system. So please make sure the physical keyboard layout should be setting with English keyboard layout.
  - 2.1 Pair scanner with mobile phone (the scanner tested is "R5524").
  - 2.2 Select "Settings" after turning on mobile phone.



2.3 Select "General".

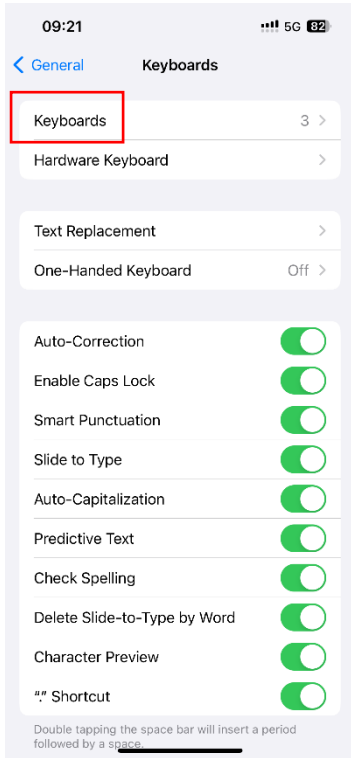


2.4 Select "Keyboard".

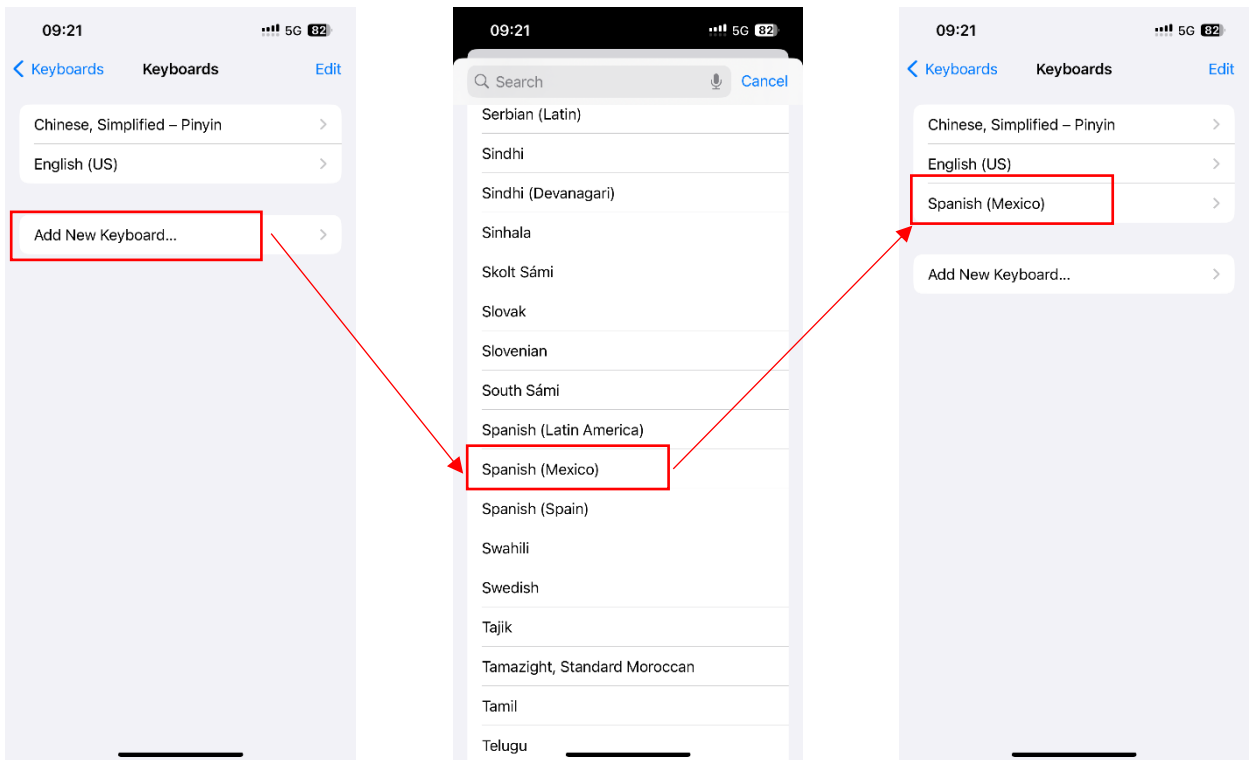




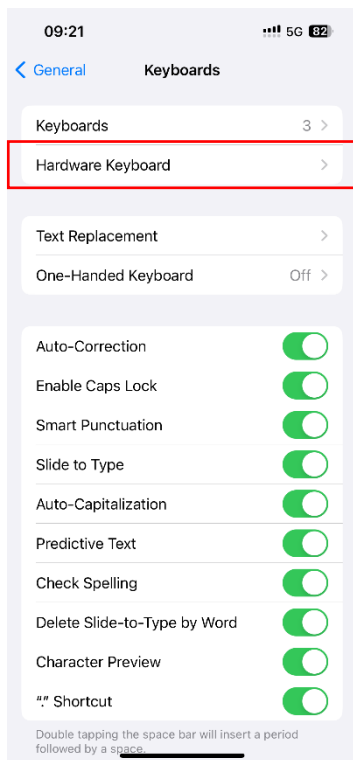
2.5 Select "Keyboards".



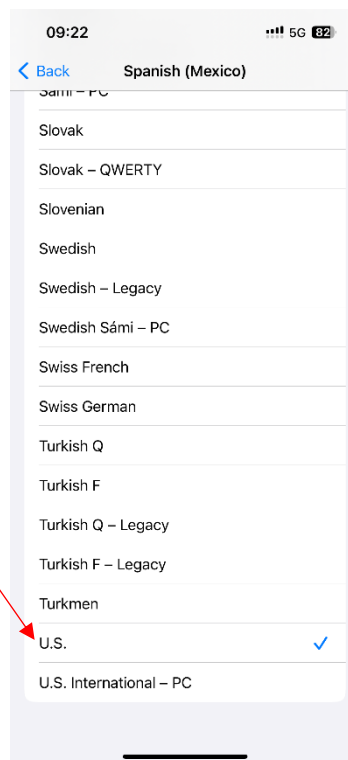
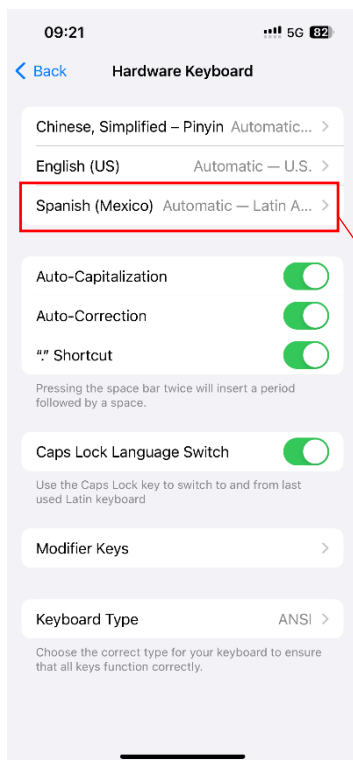
2.6 Select "Add New Keyboard...", then find the intended keyboard layout (ex. Spain Keyboard is intended, select "Spanish (Mexico)").



2.7 Return to the previous level, select "Hardware Keyboard".

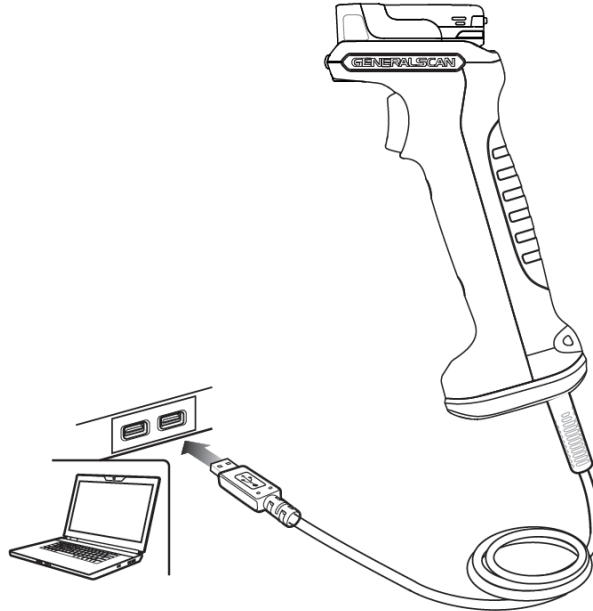


2.8 Select "Spanish (Mexico)", then select "U.S. Configuration complete, exit and ready for use."

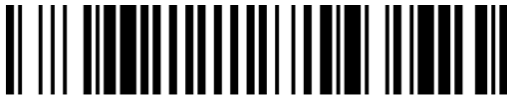


## Scenario IV

### Scanner + USB Wired-Flexgrip + Computer



1. Please scan the following barcode to set the Flexgrip as USB HID Mode.



STX 00000105 ETX

**HID Mode**

2. There are two ways to set different language keyboard layout on computer.

2.1 Please refer "[Scenario-I](#)" to change keyboard layout in windows.

2.2 The keyboard layout can be also set by directly scanning the barcode below (ex. the keyboard layout in computer is German, please scan the "German Keyboard") (Suggested). With this method, you don't have to switch keyboard input manually.



\$H2108/0%

**English Keyboard \***



\$H2108/2%

**German Keyboard**



\$H2108/1%

**French Keyboard**



\$H2108/3%

**Spanish Keyboard**



\$H2108/4%

**Italian Keyboard**



\$H2108/5%

**Portuguese Keyboard**



\$H2108/6%

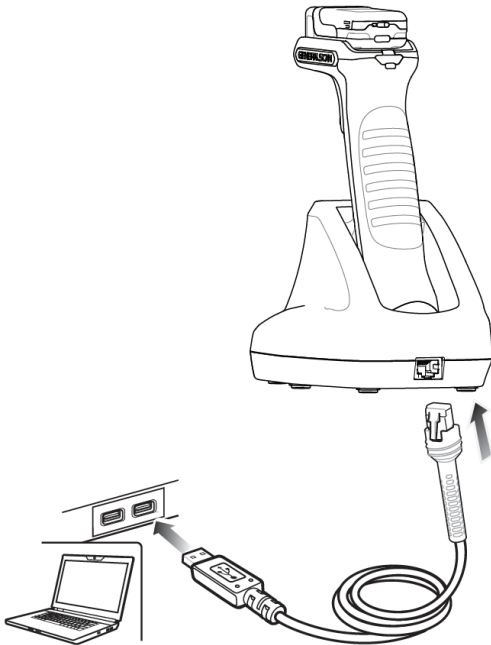
**Japanese Keyboard**



\$H2108/7%

**Swiss German Keyboard**

# Scenario V Scanner + Wireless Flexgrip + Cradle with USB + Computer



1. Please scan the following barcode to set cradle as HID Mode



<D2081>  
HID Mode

2. There are two ways to set different keyboard layout on computer end.

2.1 Please refer to "[Scenario-I](#)" if you want to change keyboard layout to manually switch software keyboard input method.

2.2 The keyboard layout can be also set by directly scanning the barcode below (ex. The keyboard layout in computer is German, please scan the "German Keyboard") (Suggested). With this method, you don't have to switch keyboard input manually.



\$H2108/0%  
English Keyboard \*



<D2108/1>  
French Keyboard



<D2108/2>  
German Keyboard



<D2108/3>  
Spanish Keyboard



<D2108/4>  
Italian Keyboard



<D2108/5>  
Portuguese Keyboard

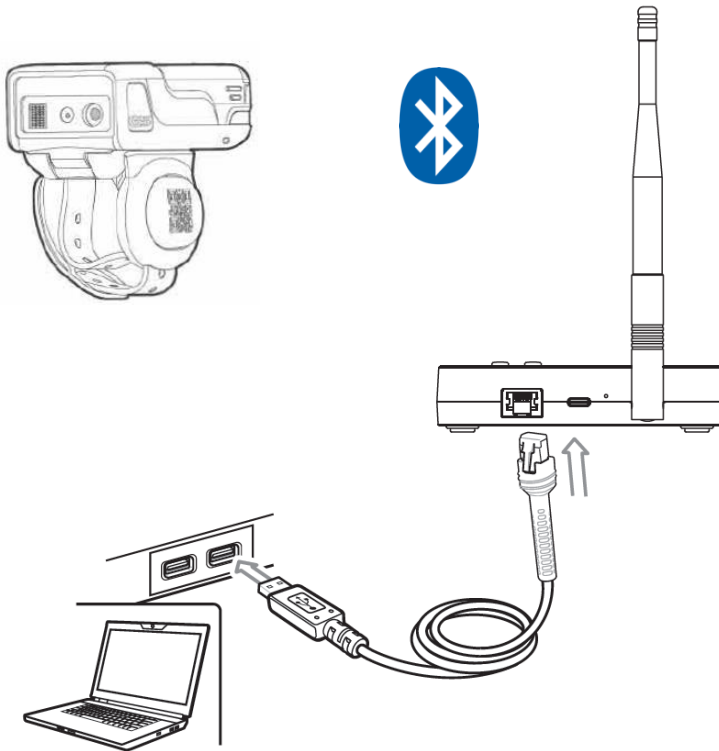


<D2108/6>  
Japanese Keyboard



<D2108/7>  
Swiss German Keyboard

## Scenario VI Scanner + Bluetooth Adaptor + Computer



1. Please scan the following barcode to set the Bluetooth Adaptor (GS GDA201&GDA202) as HID Mode.



<D2081>  
HID Mode

2. The setting method is the same with "[Scenario V](#)".