

How to Use Generalscan OTA Tools

Ver 1.0
3-5-2024

Contents

Overview	3
Steps.....	3
1. Download.....	3
1.1 Download steps from Google Play Store.....	3
1.2 Download steps from Generalscan's website.....	4
2. Install	6
3. Connecting the scanner.....	9
4 Upgrade Firmware	13
4.1 Online upgrade operation steps	14
4.2 Customized firmware upgrade operation steps	16

Overview

This document is used to guide how to use the "Generalscan OTA Tools" app to upgrade scanner firmware online or upgrade customized firmware.

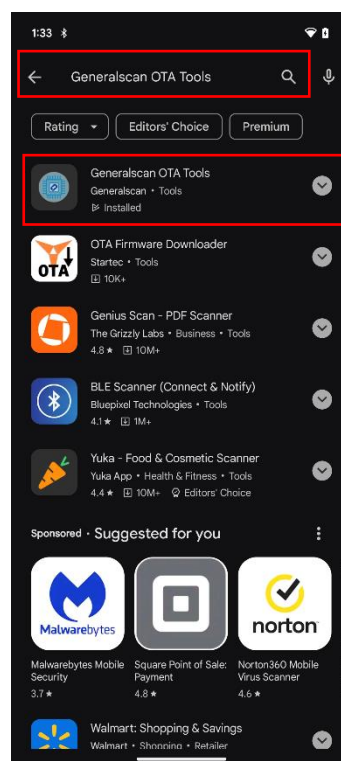
Steps

1. Download

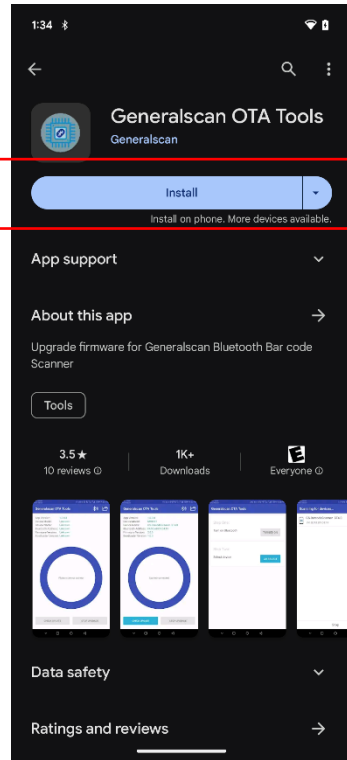
There are two ways to download the app, one is Google Play Store and the other is Generalscan's website.

1.1 Download steps from Google Play Store

1.1.1 Open Google Play Store and search for "Generalscan OTA Tools"



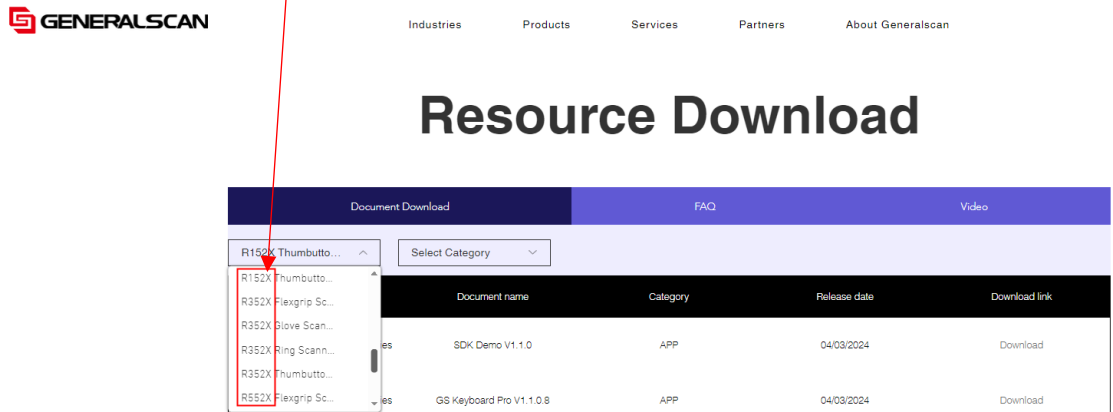
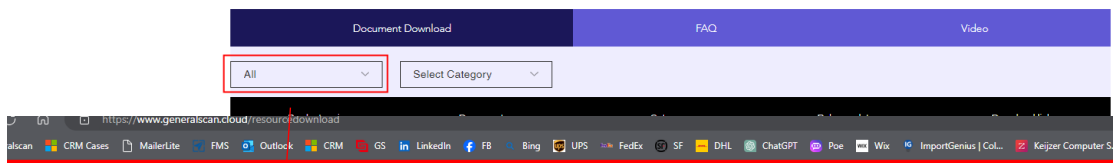
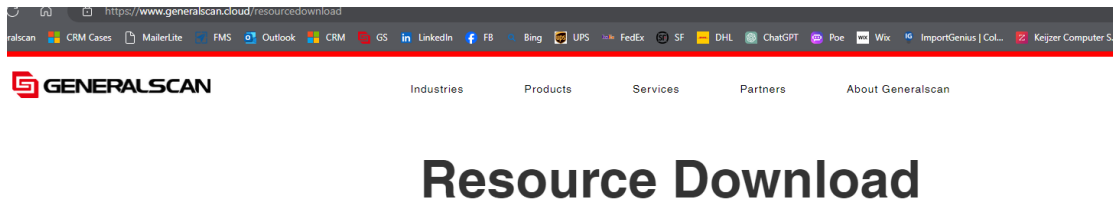
1.1.2 Download and install



1.2 Download steps from Generalscan's website

1.2.1 Click on <https://www.generalscan.cloud/resourcedownload>

1.2.2 Select the device model



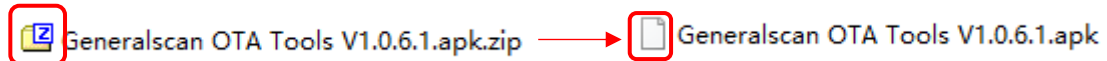
1.2.3 Find“Generalscan OTA Tools”, click on the “Download”

The screenshot shows the 'Resource Download' page on the Generalscan website. The page features a navigation bar with three tabs: 'Document Download', 'FAQ', and 'Video'. Below the navigation bar, there are two dropdown menus: 'R152X Thumbbutto...' and 'Select Category'. The main content is a table with the following columns: 'Product series', 'Document name', 'Category', 'Release date', and 'Download link'. The table contains four rows of data. The third row, 'Generalscan OTA Tools V1.0.6.1', is highlighted with a red border, and its 'Download' link is also highlighted with a red border.

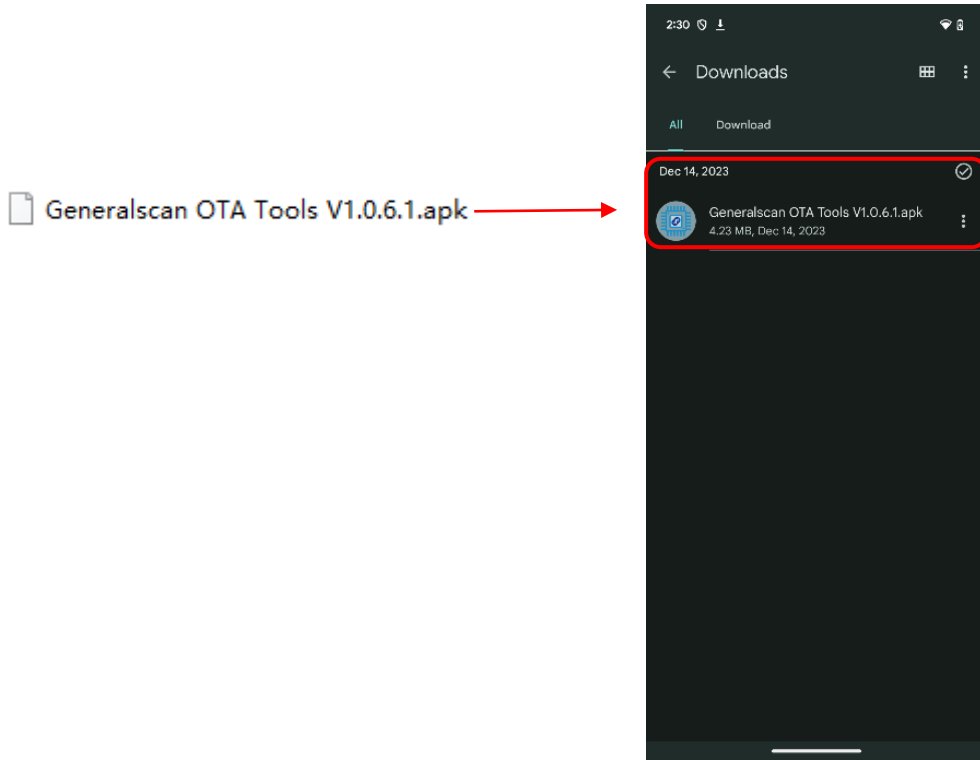
Product series	Document name	Category	Release date	Download link
R152X Thumbbutton Scanner Series	SDK Demo V1.1.0	APP	04/03/2024	Download
R152X Thumbbutton Scanner Series	GS Keyboard Pro V1.1.0.8	APP	04/03/2024	Download
R152X Thumbbutton Scanner Series	Generalscan OTA Tools V1.0.6.1	APP	04/03/2024	Download
R152X Thumbbutton Scanner Series	R1521 Engine Configuration Manual	Engine Configuration Manual	28/02/2024	Download

2. Install

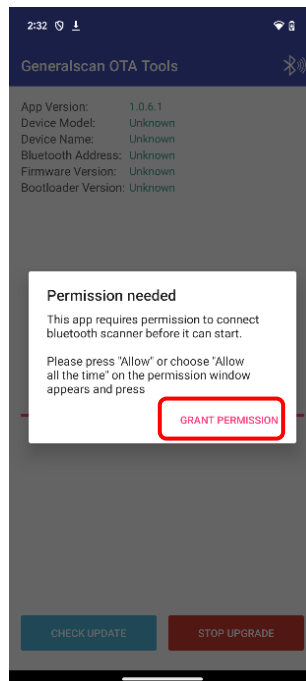
2.1 Extract the downloaded file



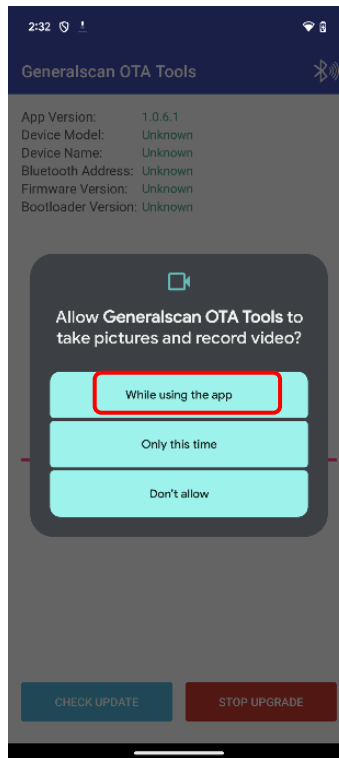
2.2 Store the decompressed file on your phone, and click on the file to install.



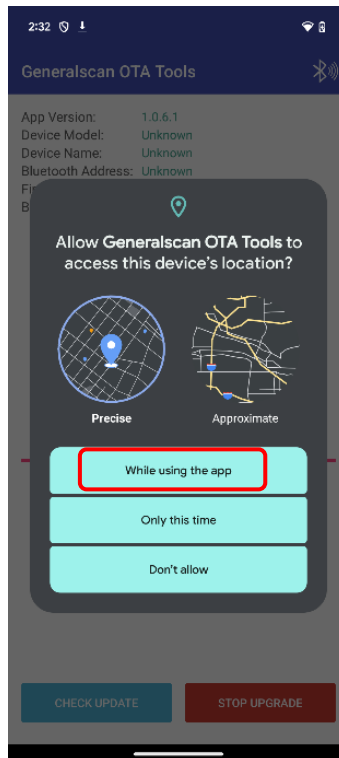
2.3 Open the app and click on the "GRANT PERMISSION" to start configuring permissions



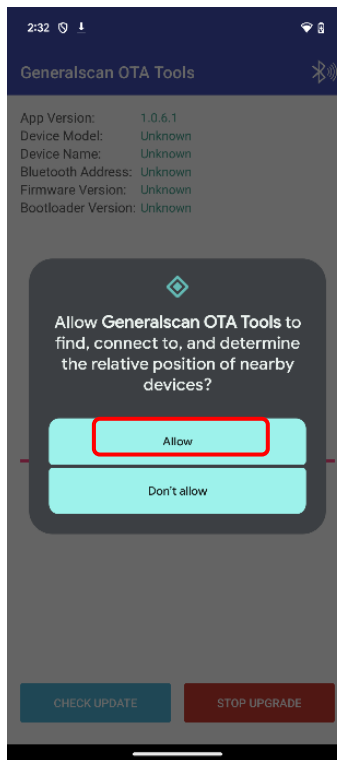
2.4 Click on the “While using the app”



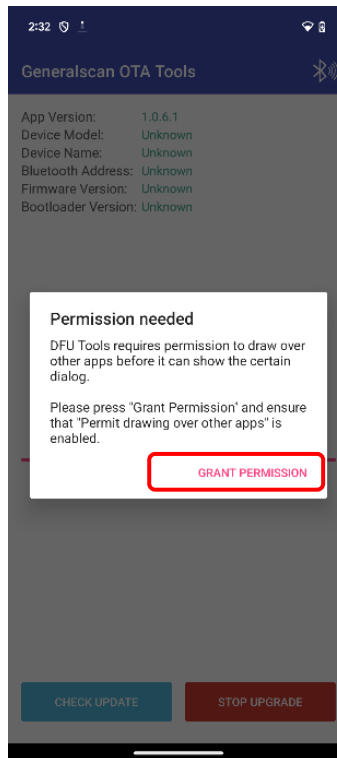
2.5 Click On the “While using the app”



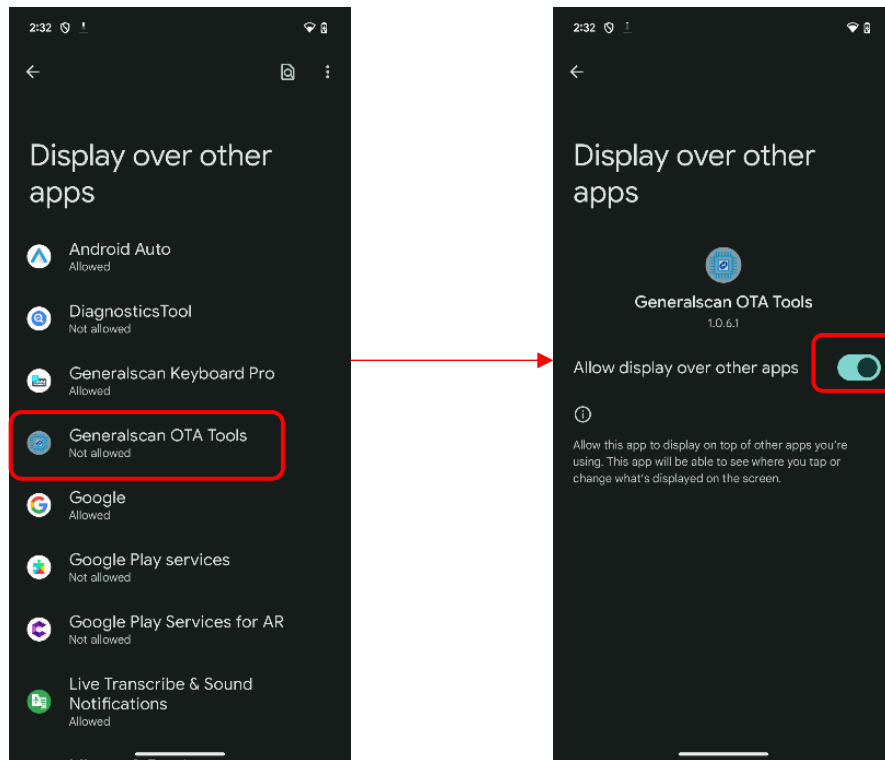
2.6 Click on the “Allow”



2.7 Click on the “GRANT PERMISSION”



2.8 Click on the “Generalsca OTA Tools” and allow display over other apps.



2.9 Configuration completed

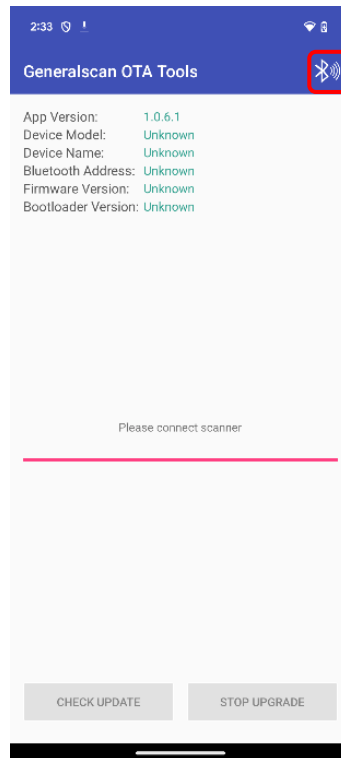
3. Connecting the scanner

3.1 The scanner power on and scans the code "Enter DFU Mode" (the test prototype is GS R3521)

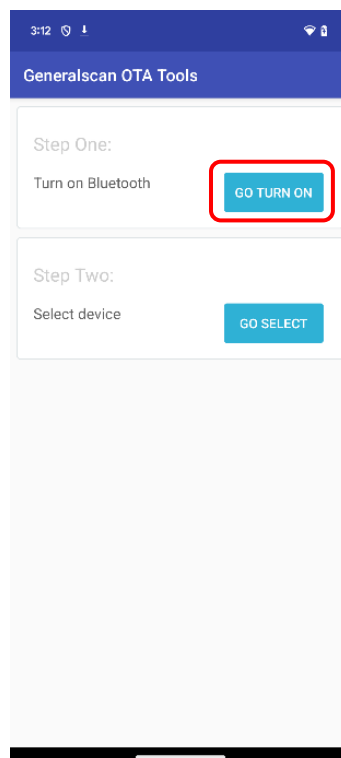


{G1002/22308}
Enter DFU Mode

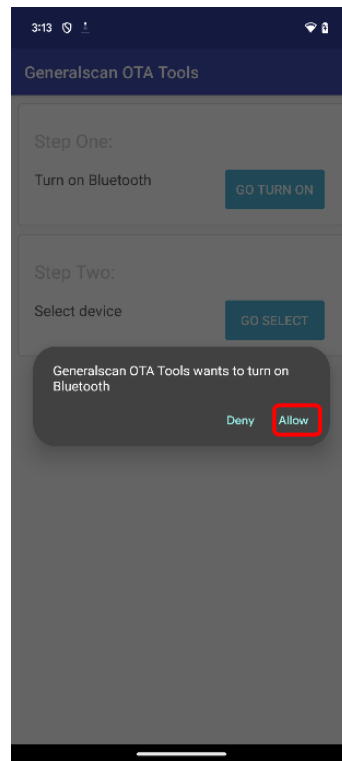
3.2 Open the "Generalscan OTA Tools" app on your phone, and then click on the Bluetooth icon



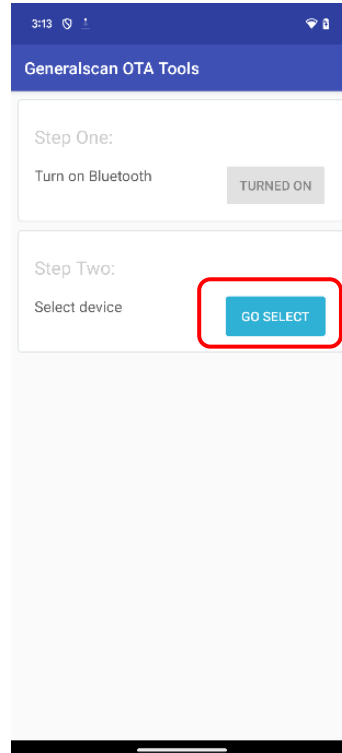
3.3 Click on the "GO TURN ON"



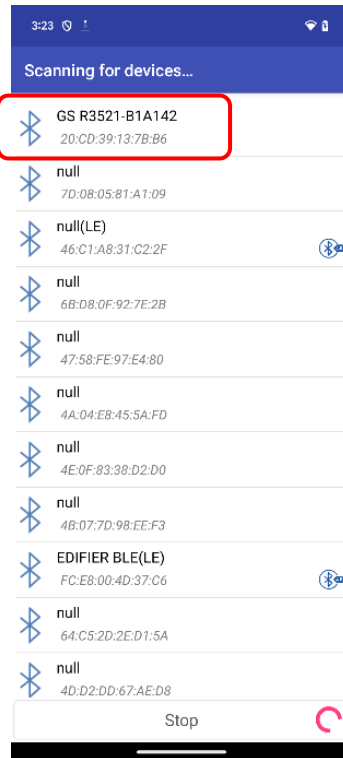
3.4 Click on the “Allow”



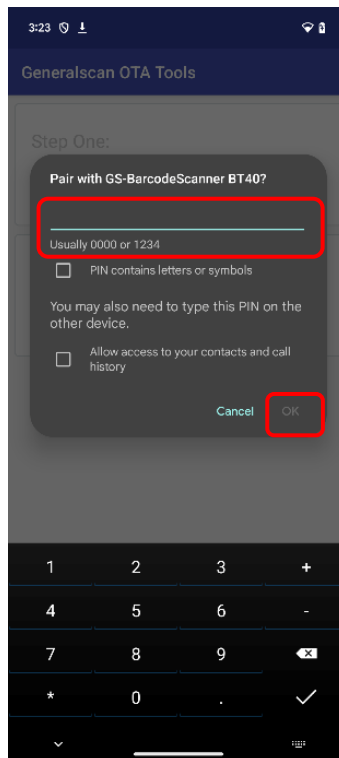
3.5 Click on the “GO SELECT”



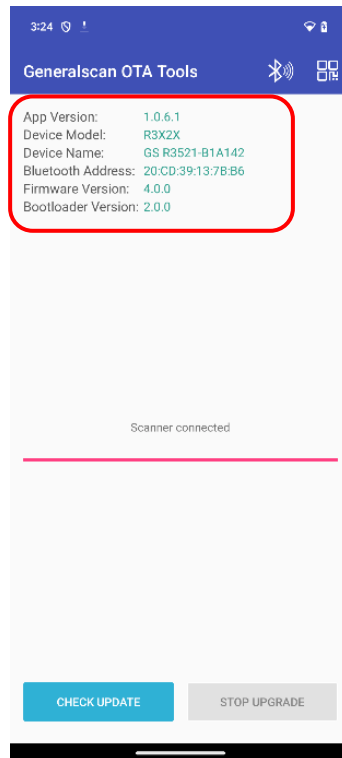
3.6 Select the device name that needs to be upgraded



3.7 Enter password 1234 and click on the "OK"



3.8 The scanner connection was successful, displaying device information

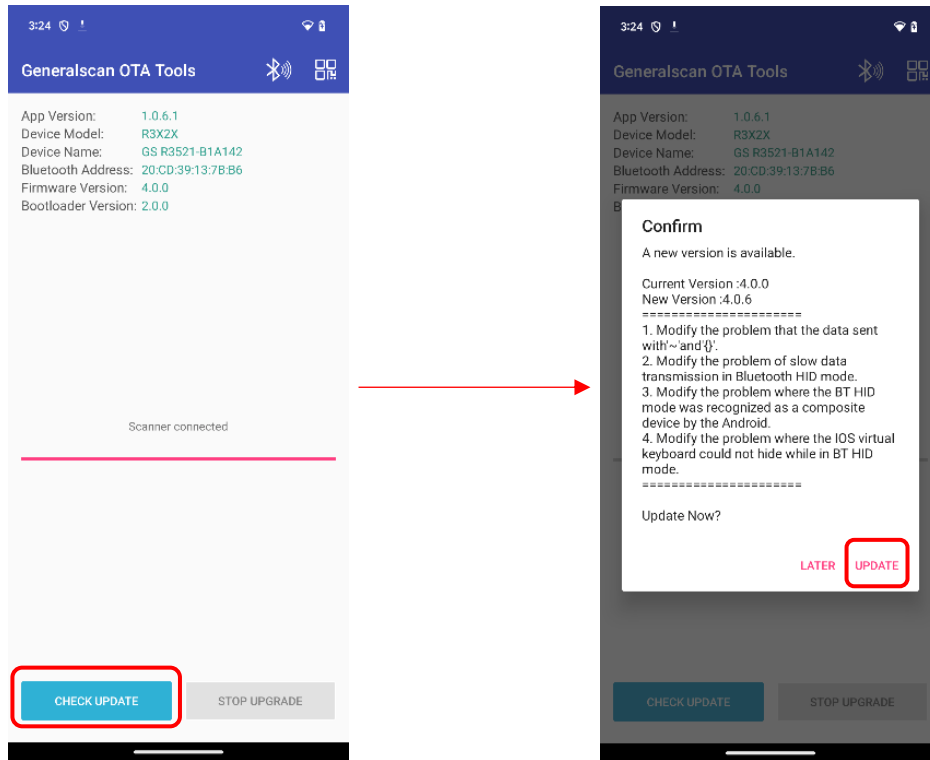


4 Upgrade Firmware

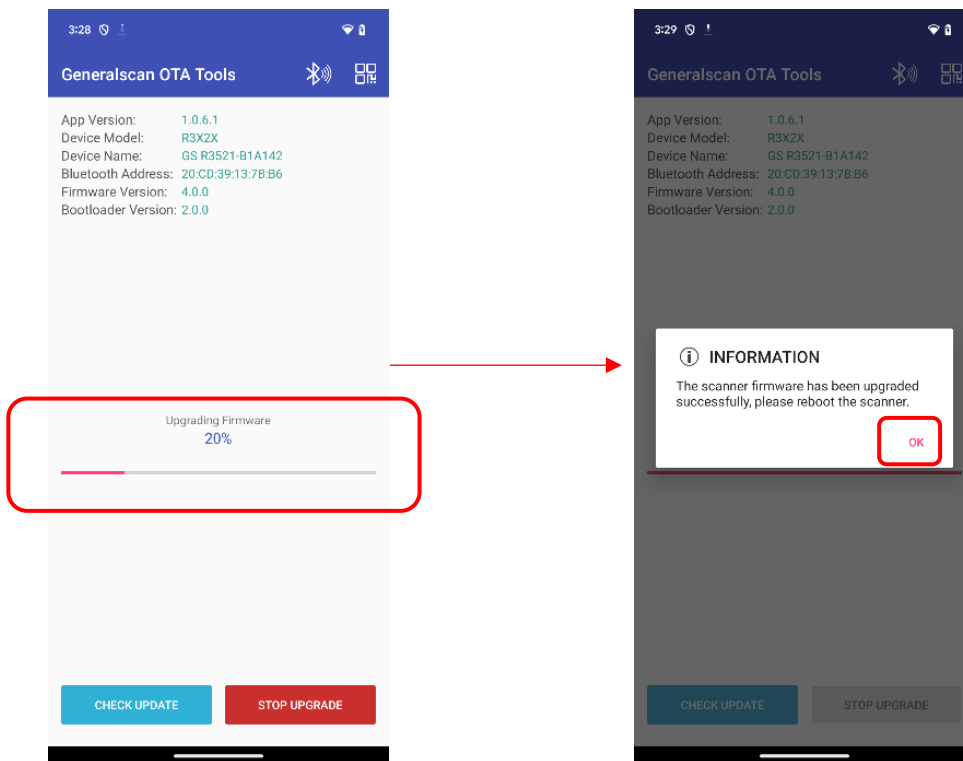
There are two ways to upgrade firmware: online upgrade and customized firmware upgrade

4.1 Online upgrade operation steps

4.1.1 Click on the “CHECK UPDATE” and click on the “UPDATE”



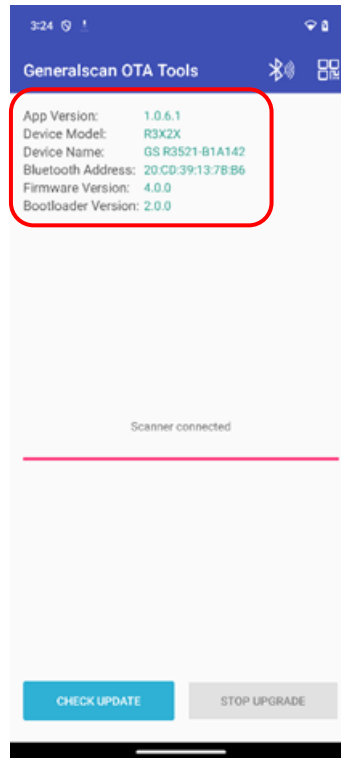
4.1.2 Wait for upgrade, click on the “OK” after successful upgrade



4.1.3 After the upgrade is completed, the scanner will automatically shut down

4.2 Customized firmware upgrade operation steps

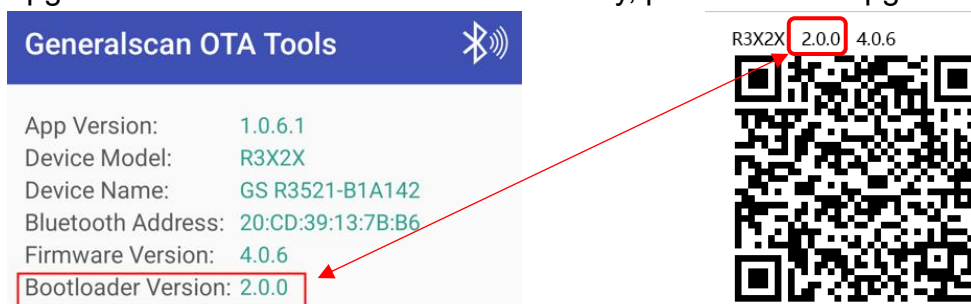
4.2.1 Check device information and provide screenshots to Generalscan



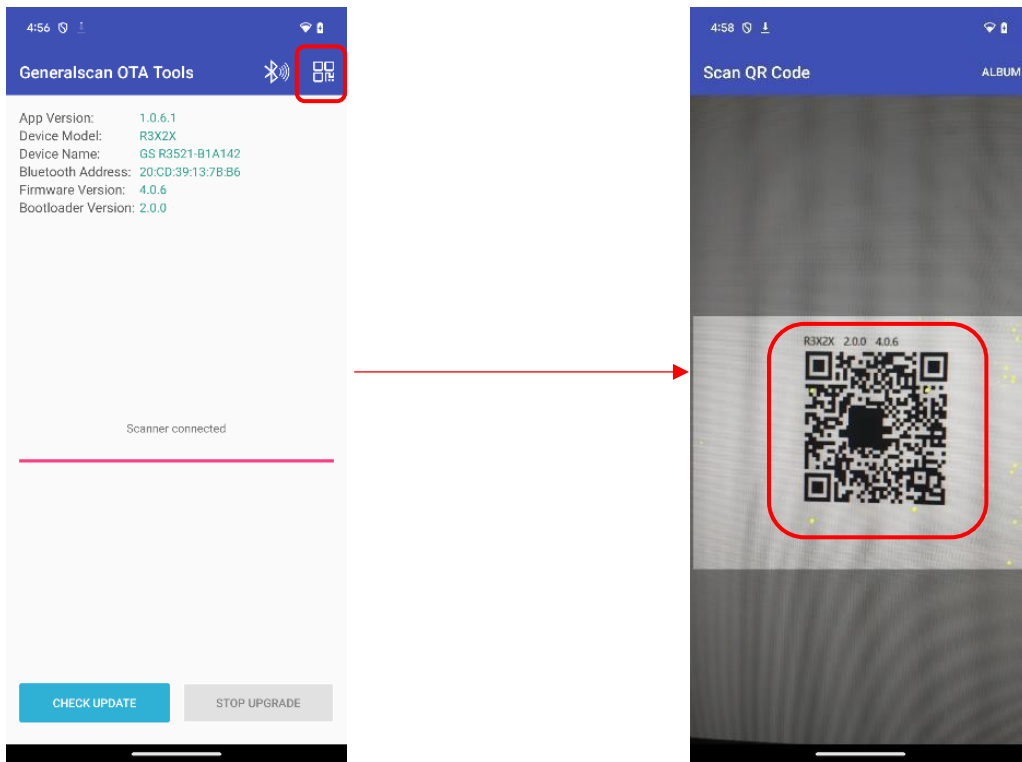
4.2.2 Based on the information provided by the customer, Generascan provides upgraded barcodes (the following image is for testing barcodes, non-standard barcodes)



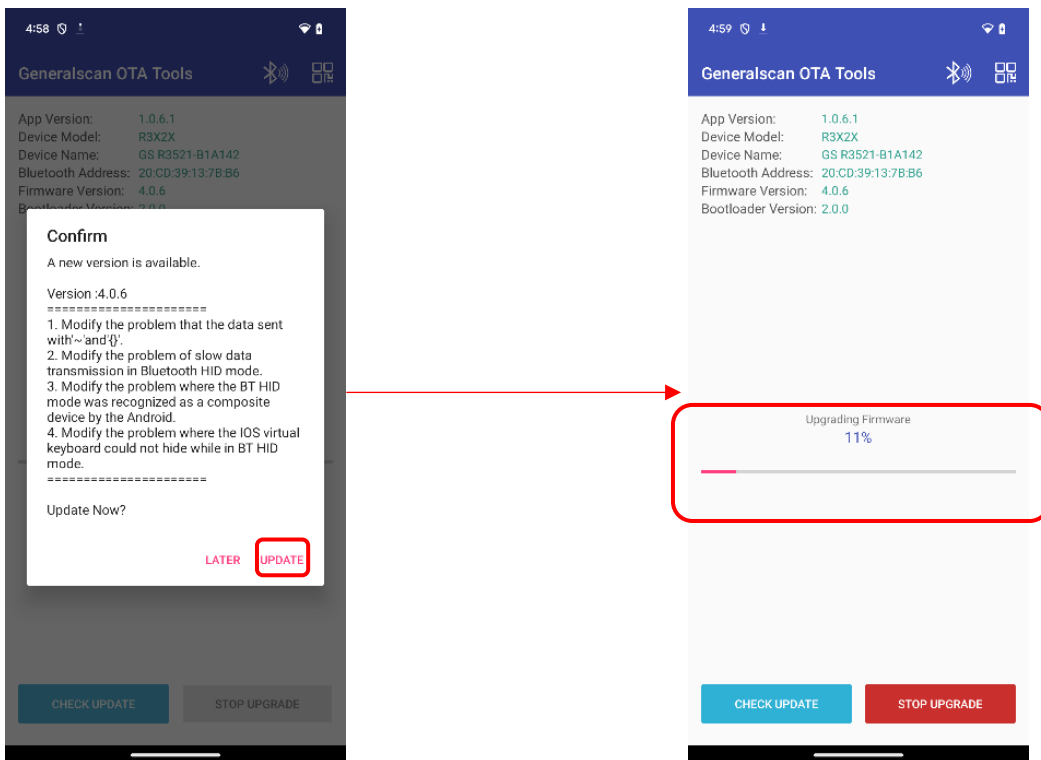
4.2.3 Before upgrading, it is necessary to carefully check whether the "upgraded device information" is consistent with the "Bootloader Version" of the "upgraded barcode". If there is inconsistency, please do not upgrade.



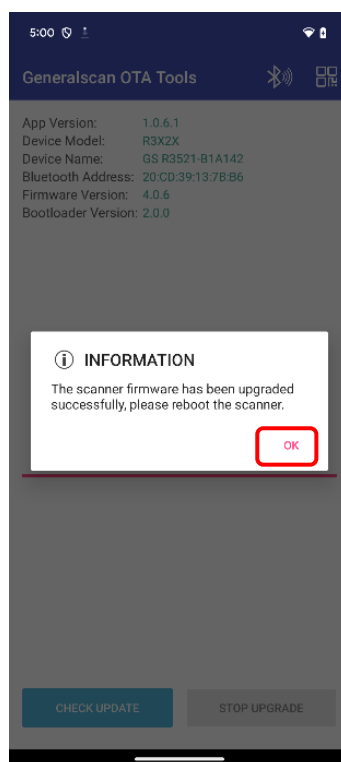
4.2.4 Click on the scan code icon, then scan the "upgrade barcode"



4.2.5 Click on the "UPDATE" and wait for upgrading.



4.2.6 Click on the “OK” after successful upgrade



4.2.7 After the upgrade is completed, the scanner will automatically shut down