

How to clean the window slice of GS R1120

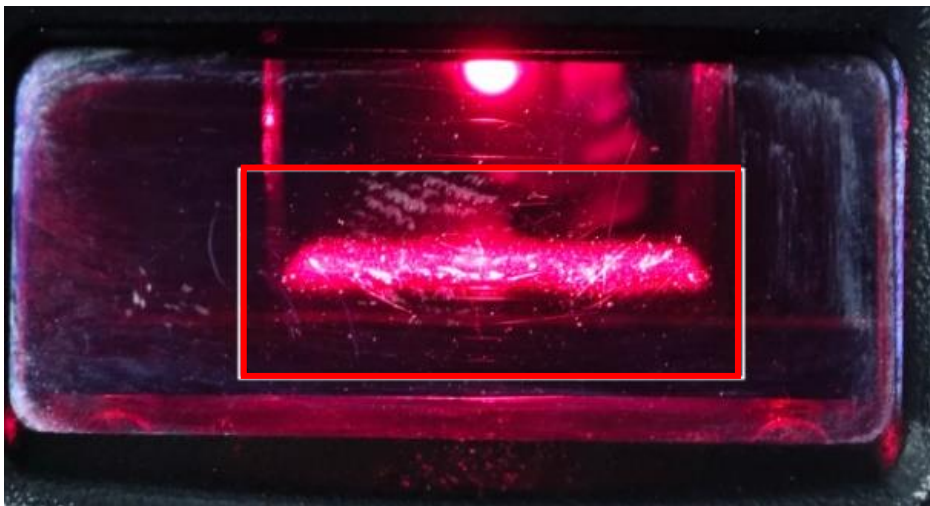
Version 1.0
Feb. 17th, 2024

Overview:

This article introducing the method of cleaning the window slice of GS R1120 once it becomes dirty (scratch and breakage are not included).

Operations:

Step1. Check the scanner - please clean the window slice according to the following steps when the red column area (this is the working area of scanning beam) appears to be dirty.

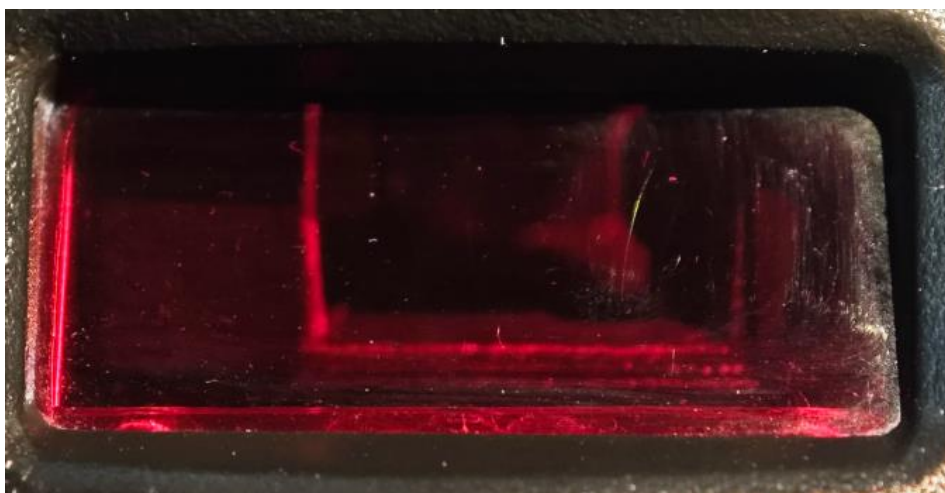


Step2. Choose cleaning tool - chamois cloth



Step3. Get cleaning liquid - *PURE WATER*

Step4. Clean the window slice - Wet chamois cloth with pure water, then wipe the window slice surface, and repeat for 5 times. Then dry the window slice by wiping it from left to right with chamois cloth to ensure that there is no any stain on it.



Step5. Check cleaning result of the window slice - no scratches on the surface of window slice, and the scanner can work normally, then this time cleaning is effective.

Please feel free to contact Generalscan if you still have problem with scanning after the steps above.