

# GS M72 DPM Mobile Computer

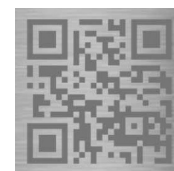
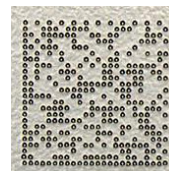
BUILT FOR ALL YOUR SCANNING NEEDS, ESPECIALLY DIRECT PART MARKS

The high-performance scanning technology delivers accurate and reliable data capture regardless of the marks are laser engraving, mechanical engraving, and inkjet printing. The Integrated illumination system enables the capture of direct part marks on surface like reflective, double images. The three-color of white, red and blue illuminating modes smartly match with the light source, providing the multiple lighting effects required to capture marks on any type of surface. These features contribute a lot on the wide-usage of GS M72 DPM in any of the industries, like manufacturing, logistics and transportation, warehouse, retails.

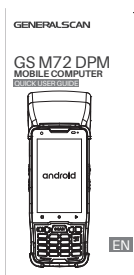


## More advanced features:

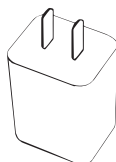
- The extraordinary DOF is available for scanning near and far
- Special designed battery compartment ensures continuous power supply even falling and flipping
- Three-color illuminating modes is ideal for decoding multi-color combination barcodes
- The overall structural design ensures the most compact of the body
- 20 illumination grades contributes more to different scan scenarios
- Authorized with the latest decoding technology and Algorithm



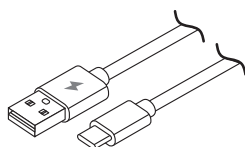
## PACKING & ACCESSORIES



Quick User Guide



Power Adapter



USB Type-c Cable



Battery



Battery Charging Base



Handle

## PRODUCT SPECIFICATION

### GS M72 DPM Mobile Computer

#### PHYSICAL PARAMETER

Demension	215.2mm(L)×81.5mm(W)×75.8mm(H)
Weight	378g with battery
Keypad	anti-wear/interior lights industrial keyboard, right&left scan key, right&left custom key, return key, homepage key, touch-switch key
Voice and Audio	Two microphones with noise cancellation; vibrate alert; dual speakers

#### BASIC FEATURES

Operation System	Android 12
CPU	octa-core, 2.0 GHz
Display	4.0 in.; IPS; 800*480 pixels; capacitor pen, wet hand operation and glove operation avialable
Memory	RAM: 3GB; Flash: 32GB
Extended Storage	TF card, max. 128GB
Primary Camera	Main camera autofocus, 13 million pixels, dual flash
Battery/Charger	5100mAh, swappable; 5V --2A Adaptor
Interface Ports	USB 2.0, Type-C, charging/data, accessory function expansion interface, bottom charging interface
Sensor	Gravity sensor, proximity sensor, light sensor, Hall sensor
Light Indicator	The red light is always on when the battery is low Charging indicator: red light means charging Green light means fully charged

#### NFC SPECIFICATION

Frequency	13.56MHz NFC
NFC Reading Distance	0-5cm
NFC Smart Tag	ISO 14443 A/B、ISO 15693、MIFARE

#### RF SPECIFICATION

WLAN	IEEE 802.11 a/b/g/n/ac 2.4G/5G
Bluetooth	BT 5.1/BLE

#### CERTIFICATION

CCC,SRRC, GMS

#### PACKAGING & ACCESSORIES

User Guidex1, Adaptorx1,USB data-transfer cablex1, batteryx1

#### PERFORMANCE CHARACTERISTICS

Optical Resolution	640 x 480 pixels
Sensor	2D CMOS dual cameras
Field of view	HD: 34.1° Horizontal x 26.2° Vertical ER: 22.2° Horizontal x 16.8° Vertical
Illumination	White/Red/Blue LED
Aiming	Laser Red
Supported Symbologies	1D: code39; code128; code 32; codabar; code 93; UPC-A; UPC-E; EAN8; EAN13; MSI; GS1-128 2D: Aztec Code; China Han Xin Code; Data Matrix; MaxiCode; Micro QR Code; QR Code; Digimarc Postal Code: Australian Post; British Post; China Post; IMB; Japanese Post; KIX Post; Korea Post; Planet Code; Postnet; Royal Mail Code (RM4SCC)

#### USER ENVIRONMENT

Operating Temperature	-25°C ~ 55°C
Storage Temperature	-30°C ~ 70°C
Humidity	5%-95% non-condensing
Drop Spec.	1.8m on concrete, 3 times on each side
Tumble Spec.	3000 hits of 0.5m tumble,600 hits of 1m tumble
IP level	IP52
ESD	± 8 kv contact discharge, ± 15 kv air discharge,

#### DECODE RANGES

Resolution (Maximum)	1D linear: 2.5 mil; Data Matrix: 4 mil
20 mil Code 39	110 mm - 1100 mm
EAN13	80 mm - 750 mm
10 mil Code 39	60 mm - 700 mm
5 mil Code 39	50 mm - 380 mm
3.13 mil Code 39	80 mm - 290 mm
15 mil Datamatrix	50 mm - 550 mm
5 mil Datamatrix	70 mm - 110 mm
5 mil QR Code	70 mm - 110 mm
4 mil DataMatrix	75 mm - 100 mm

#### SOFTWARE SUPPORT

Generalscan Keyboard Pro  
Generalscan SDK Demo  
Generalscan OTA Tools  
G-Service

## GENERALSCAN

#### Generalscan Inc.

200 Buckelew Ave, Jamesburg,  
NJ 08831, USA  
+1 732 895 6821

#### Generalscan Electronics GmbH

Hochstraße 42, 52525  
Heinsberg Germany  
+49 1516 7161256

#### Generalscan LLC

Calle San Luis Potosi 51,  
Roma Norte 06700,  
Ciudad de México  
+52 5552727861

#### GENERALSCAN ELEKTRONIK VE TEKNOLOJİ SAN. VE TİC. LTD. ŞTİ.

FSM Mah. Siir Sk. Relux Plaza No 10,  
Ümraniye 34764,  
İstanbul, Turkey  
+90 542 478 5873