

# GS T56 MOBILE COMPUTER

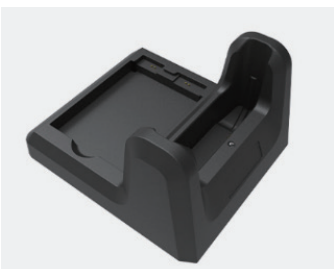
6 INCH FULL TOUCH SCREEN LETS WORKERS SEE MORE, DO MORE



## FEATURES

- 6.2" full-size screen with ultra-high definition resolution.
- 1D code, 2D code easily recognized.
- Supports fingerprint unlocking, safe and convenient to protect data security.
- 5000mAh removable battery with ultra-long battery life, supports ultra-fast flash charging.
- Dual speakers design and 100dB volume make prompts can be heard clearly, even in noisy environments.
- IP67 professional level, waterproof, dustproof, shockproof.

## OPTIONAL ACCESSORIES



Charging Cradle(available in June, 2024)

# PRODUCT SPEC SHEET

## GS T56 MOBILE COMPUTER

### PHYSICAL PARAMETER

Dimensions	168.3mm(L)×79.5mm(W)×16.9mm(D) 6.63in.(L)×3.131in.(W)×0.671in.(D)
Weight	309g/10.9oz(include battery)
Buttons	Left/Right Scan Key, power key, Volume button
Voice and Audio	100dB dual speakers Power: 1W Dual microphone: main microphone + noise-canceling microphone

### PLATFORM AND FEATURES

Operating System	Android 12
CPU Model	Octa-Core, up to 2.0GHz, 12nm
Display	6.217" TFT (IPS), HD+, 720×1520
Touch Panel	Corning GC3, full lamination, with AF anti-fingerprint oil, G+F+F process, glove touch available
Memory	4GB RAM+64GB ROM
SIM	Nano SIM slot
Extended Storage	TF Card, up to 256GB
Camera	Front camera 5M; Rear camera 13M; Flash light
Battery/Charger	5000mAh, swappable
USB Interface	USB Type-C
Motion Sensors	Light/distance, 3D accelerated gravity, geomagnetic, gyroscope
Fingerprint identification	Fingerprint recognition on the back

### NFC SPECIFICATION

Frequency	13.56MHz
NFC Reading Distance	0-10cm
NFC Smart Tag	ISO/IEC 18000-3/18092 ISO/IEC 14443 A/B ISO/IEC 15693 Mifare compliance

### RF SPECIFICATION

WLAN	2.4G/5G/ LAN 802.11/ac/a/b/g/n
Bluetooth	BT 5.0
WWAN	GSM: 850/900/1800/1900MHz CDMA EVDO: BC0 WCDMA: 850/900/1900/2100MHz TD-SCDMA: A/F(B34/B39) TDD/FDD: B1, B3, B5, B7, B8, B20, B38, B39, B40, B41
GPS	GPS/BeiDou/Galileo/GLONASS/AGPS

### PERFORMANCE CHARACTERISTICS

Optical Resolution	1280×800 pixels
Sensor	2D CMOS
Field of view	42°horizontal x 28°vertical
Illumination Element	White LED
Aiming Element	Red Laser(650nm)
Symbol Decode Capability	<b>1D:</b> EAN13, EAN8, UPCA, UPCE, Code 128, Code 39, Codabar, UCC/EAN128, RSS, ITF, ITF14, ITF6, ISSN, ISBN, Standard 25, Matrix 25, Industrial 25, Plessey, MSI Plessey, Code 11, Code 93, etc. <b>2D:</b> PDF417, QR Code, DataMatrix, AZTEC, HanXin Code, Maxicode, Micro QR, Micro PDF417, Composite, etc.

### USER ENVIRONMENT

Operating Temperature	-4°F~-140°F/-20°C~60°C
Storage Temperature	-40°F~-158°F/-40°C~70°C
Humidity	5%-95%, non-condensing
Drop Spec.	Pass multiple drops from 1.64 ft./0.5m high
IP Level	IP 67
ESD	±8kv contact discharge, ±15kv air discharge

### DECODE RANGES

5 mil Code 39	4.7in.-11.0in. /120.0mm-280.0mm
6.7 mil PDF417	4.3in.-9.1in. /110.0mm-230.0mm
10 mil Data Matrix	4.3in.-10.2in. /110.0mm-260.0mm
13 mil EAN-13	2.8in.-23.6in. /70.0mm-600.0mm
15 mil QR	2.2in.-15.8in. /55.0mm-400.0mm

### SOFTWARE SUPPORT

Generalscan Keyboard Pro
Generalscan SDK Demo
Generalscan OTA Tools
G-Service

### OPTIONAL ACCESSORIES

USB Type-C Cable, Adaptor, Resource Download Card, Hand Strap

# GENERALSCAN

#### Generalscan Inc.

200 Buckelew Ave, Jamesburg,  
NJ 08831, USA

+1 732 895 6821

#### Generalscan Electronics GmbH

Hochstraße 42, 52525  
Heinsberg Germany

+49 1516 7161256

#### Generalscan LLC

Calle San Luis Potosi 51,  
Roma Norte 06700,  
Ciudad de México

+52 5552727861

#### GENERALSCAN ELEKTRONIK VE TEKNOLOJI SAN. VE TIC. LTD. ŞTİ.

FSM Mah. Siir Sk. Relux Plaza No 10,  
Ümraniye 34764,  
İstanbul, Turkey

+90 542 478 5873